



THE HAPPIEST SHOW ON EARTH

Inspired by the Medicine Shows of the early 1900's, this new production for 4-8 year olds, explores the theme of children's happiness in a story emblazoned with foot-stomping music and dazzling vaudevillian theatrics involving magic, illusion and comedy.

This play was first presented as a staged reading in April 2008, at the John F Kennedy Centre for the Performing Arts, as part of New Visions/New Voices 2008

The show was written by Dave Brown and Paul Blackwell with the support, contributions, fierce scrutiny and collective dramaturgy of the creative team comprising: Stuart Day, Lindi Jane, Kerry Reid, Sally Chance, Jacqy Phillips, Greg Cousins, Bob Weatherly and the team at New Visions/New Voices 2008.

Songs: Dave Brown and Stuart Day*

(*except Pink Lilly the Flea adapted from the traditional folk song The Ballad of Lydia Pinkham and The Medicine Show by Doc Tommy Scott)

CAST:

DrTerrance Jupiter Smith: Paul Blackwell

Dr Zachary Neptune Smith: Stuart Day

Dorothy Venus Smith (role shared by): Lindi Jane and Kerry Reid

CREATIVE TEAM:

Director: Dave Brown

Provocateur/Assistant Director: Sally Chance

Musical Director: Stuart Day

Designer: Dean Hills

Lighting Designer: Susan Grey-Gardner

Ventriloquist Trainer: Lindi Jane

Illusion Consultant: Greg Cousins

Production Manager: Bob Weatherly

Stage Manager/Sound & Lighting Operator: Jim Confos

Assistant Stage Manager (role shared by): Kerry Reid and Lindi Jane

Set Construction: Pat Moore

Costume Maker: Kellie Jones

Scenic Art: Dean Hills, Kerry Reid and Sandra Anderson

Props Construction: Bob Weatherly, Jim Confos and Dean Hills

Ventriloquist Doll Maker: Gordon Ross

Technical Information Contacts:

Dave Brown, Artistic Director - Patch Theatre

dave@patchtheatre.org.au

Amanda Jones - General Manager

Belinda McQueen – General Manager

Level 1, Lion Arts Centre

Cnr Morphett St & North Tce

ADELAIDE SA 5000

Ph: 61 8 8218 8407

Fax: 61 8 8410 6798

www.patchtheatre.org.au

amanda@patchtheatre.org.au

belinda@patchtheatre.org.au

Bob Weatherly – Production Manager

Ph 0428 251201

bweatherly@internode.on.net

TECHNICAL SPECIFICATIONS

FACILITIES

We appreciate the use of a laundry with washer, dryer, iron & ironing board to maintain the costumes.
We require 2 dressing rooms with 2 female and 2 male cast members.
We appreciate the use of a green room for tea and coffee facilities & bottled water

SCHEDULES

Bump In
Unpacking/assembly/build set/rig sound 2 hours
THEN
Check pre-rig and focus lights
Lighting plot adjustment/sound check 4 hours
THEN
Tech / Dress Rehearsal 2 hours

EG: Start at 9 am, 1pm lunch (1 hr), finish at 6 pm

Venue Crew

Bump In

1 mech for set build
2 LX for focus and rigging
1 SND for sound installation

Performance

1 Duty technician

Bump out

2 mechs

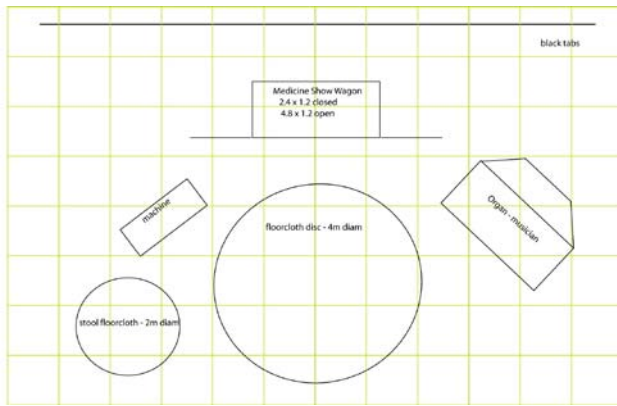
PATCH CREW STATIONS

1. SM/LX/SND Operator – located in auditorium
Need DMX line, sound input and output lines to stage, sound line to venue foh sound.
2. ASM at Downstage Prompt corner.
Headset communication - LX operator to ASM

SET & STAGING

Minimum performance stage size is 9m wide x 8m in depth.
Black drapes are hung around the stage area to form a black box.
All elements are free standing, no fly bars required.





SOUND

The following elements are supplied by Patch

1. Electric piano

input line to mixer

Output send 1 to upstage Quest speakers behind Music Rostra

Output send 2 to VENUE FOH

2. Computer sound

stereo input lines to mixer

Output send 1 to upstage Quest speakers behind Music Rostra

output send 2 to VENUE FOH

3. Guitar radio pickup

input line to mixer

Output send 1 to upstage Quest speakers behind Music Rostra

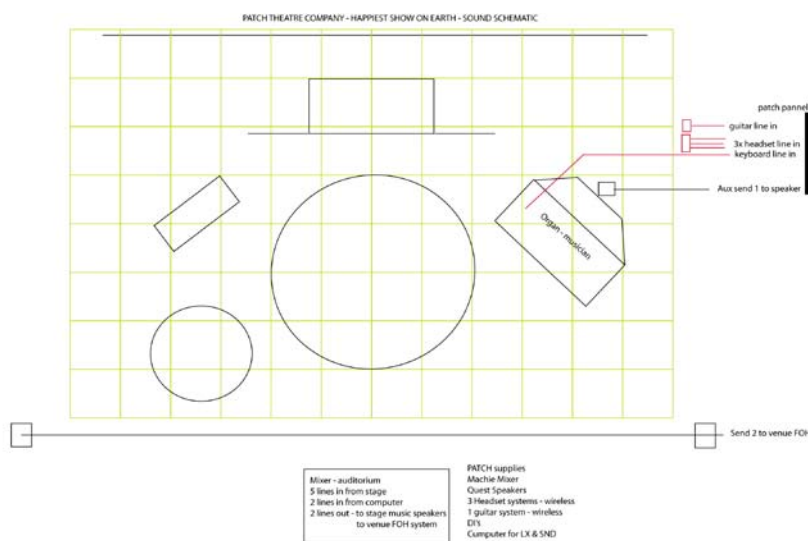
Output send 2 to VENUE FOH

4. Cast head set microphones x 3

input lines to mixer

output send 2 to VENUE FOH

We supply : A Mackie mixer to a pair of Quest powered speakers on the set, cables & a sound multicore.
 In VENUES we need to patch our mixer to the VENUES FOH SOUND SYSTEM



LIGHTING

We tour our own lighting desk–Notebook using PCStage Program – (**Need connection to DMX**)

Pre-rig and color requested

70 dimmers required

FOH floor Par 30, all inset lamps, hazers, smoke machines & VariLite are supplied by Patch

We tour as part of the rig a Vari Lite VL1000TS. This will be on or near LX3 and will require a GPO outlet and DMX.

On the floor we need **26 dimmer circuits** PLUS 3 GPO for 1 hazer and 2 smoke machines.

We tour 1x 6way Whelan to the machine set.

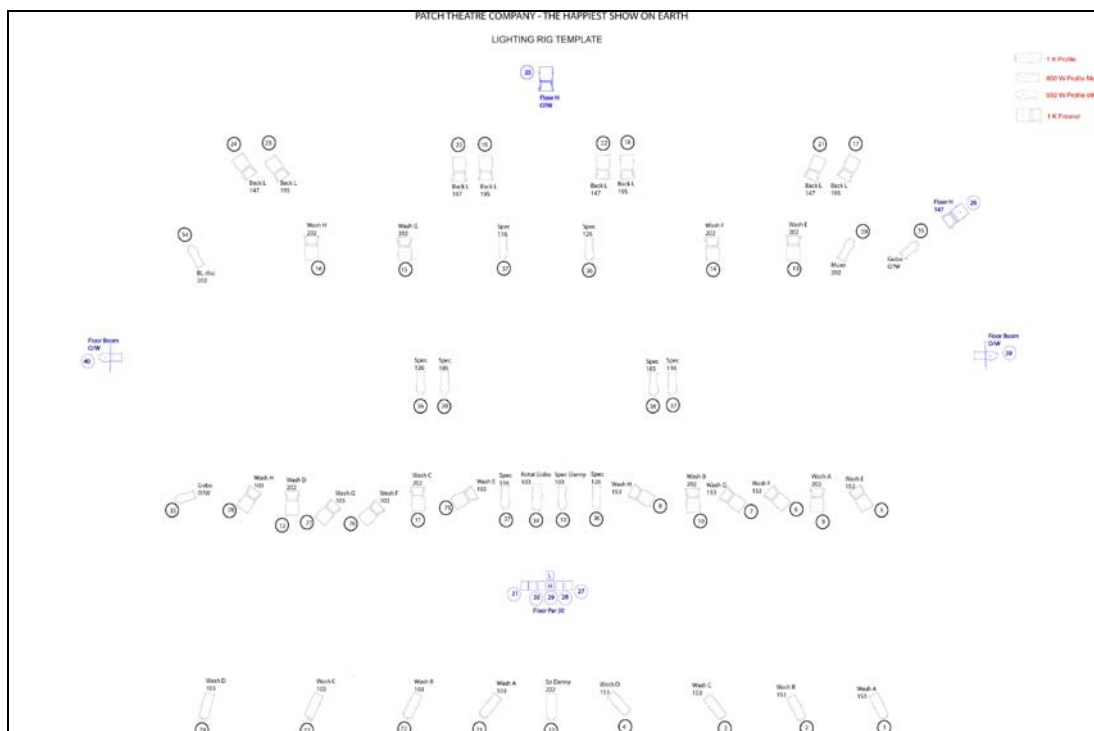
We tour 1x 5way madeup loom to the Par 30's downstage centre.

Venue Specific information for LX rig is provided on separate files.

Lamp / Color List

LAMP	L103	L116	L126	L147	L153	L182	L195	L202	O/W
650W ACCLAIM - zoom	1	3	2			3		3	
PACIFIC 14/35	4				4			1	
PACIFIC 24/44	1								
PACIFIC 43/75									2
1200W PC				4			4		
1200W FRESNEL	4			1	6			8	1

The 14-35, 24/44, 43/75 Profiles in the original rig were Pacifics & can be replaced with 1K or 1.2K Profiles.
The 650W zoom Profiles in the original rig were Axial Acclaims and can be replaced with similar.



Lighting Schedule

Fader / DMX Ch	Role	Positn	LAMP	COLOR	Bar Plug	Dimmer
1	FOH Warm DS P - A	FOH 1	Pacific 14/35	L153		
71	FOH Warm DS P - A	FOH 1	Pacific 14/35	L103		
2	FOH Warm DS C P - B	FOH 1	Pacific 14/35	L153		
72	FOH Warm DS C P - B	FOH 1	Pacific 14/35	L103		
3	FOH Warm DS OP C - C	FOH 1	Pacific 14/35	L153		
73	FOH Warm DS OP C - C	FOH 1	Pacific 14/35	L103		
4	FOH Warm DS OP - D	FOH 1	Pacific 14/35	L153		
74	FOH Warm DS OP - D	FOH 1	Pacific 14/35	L103		
5	Warm US P - E	LX 1	1.2K Fresnel	L153		
75	Warm US P - E	LX 1	1.2K Fresnel	L103		
6	Warm US C P - F	LX 1	1.2K Fresnel	L153		
76	Warm US C P - F	LX 1	1.2K Fresnel	L103		
7	Warm US C OP - G	LX 1	1.2K Fresnel	L153		
77	Warm US C OP - G	LX 1	1.2K Fresnel	L103		
8	Warn US OP - H	LX 1	1.2K Fresnel	L153		
78	Warn US OP - H	LX 1	1.2K Fresnel	L103		
9	Cool DS P - A	LX 1	1.2K Fresnel	L202		
10	Cool DS CP - B	LX 1	1.2K Fresnel	L202		
11	Cool DS C OP - C	LX 1	1.2K Fresnel	L202		
12	Cool DS OP - D	LX 1	1.2K Fresnel	L202		
13	Cool US P - E	LX 2	1.2K Fresnel	L202		
14	Cool US C P - F	LX 2	1.2K Fresnel	L202		
15	Cool US C OP - G	LX 2	1.2K Fresnel	L202		
16	Cool US OP - H	LX 2	1.2K Fresnel	L202		
17	Back Light P	LX 3	1k PC	L185		
18	Back Light C P	LX 3	1k PC	L185		
19	Back Light C OP	LX 3	1k PC	L185		
20	Back Light OP	LX 3	1k PC	L185		
21	Back Light P	LX 3	1k PC	L147		
22	Back Light C P	LX 3	1k PC	L147		
23	Back Light C OP	LX 3	1k PC	L147		
24	Back Light OP	LX 3	1k PC	L147		
54	Small disc Backlite	LX 3	650 Axial Zoom	L202		
25	Floor Backlight C Wagon	Floor	1.2K Fresnel	O/W		
26	Floor Backlight Musician	Floor	1.2K Fresnel	L147		
27	Floor Par 30 DS 1	Floor	Par 30	O/W		
28	Floor Par 30 DS 2	Floor	Par 30	O/W		
29	Floor Par 30 DS 3	Floor	Par 30 x 2	O/W		
30	Floor Par 30 DS 4	Floor	Par 30	O/W		
31	Floor Par 30 DS 5	Floor	Par 30 x 2	O/W		
32	FOH Cool C = Sp Danny	FOH	Pacific 14/35	L202		
33	Special - Danny	LX 1	650 Axial Zoom	L103		
34	Deckle Gobo Sp Carrots	LX 1	Pacific 24/44	L103,gobo		
35	Wide angle Diagonal	LX 1, 3	Pacific 43/75 x 2	O/W,gobo		
36	Special Floor Cloth 1	LX 1,2,3	650 Axial Zoom x3	L126		
37	Special Floor Cloth 2	LX 1,2,3	650 Axial Zoom x3	L116		
38	Special Floor Cloth 3	LX 2	650 Axial Zoom x2	L185		
39	Floor Boom P	Floor	650 Axial Zoom	O/W		
40	Floor Boom OP	Floor	650 Axial Zoom	O/W		

41	Wagon - Top shelf Fluoros	set	Fluro			
42	Wagon - Top Sunburst LED	Set	LED			
43	Wagon - Side Top	Set	Dichroic			
44	Wagon - Side Centre	Set	Dichroic			
45	Wagon - Side Bottom	Set	Dichroic			
46	Wagon - Underneath	Set	150 Flood x 2			
47	Wagon - Ceiling	Set	Dichroic			
48	Wagon - Danny Special	Set	Dichroic			
49	Machine - Terry Face Fill	Set	Dichroic			
50	Machine - Face & Bottle Hi Lite	Set	Dichroic			
51	Machine - LED behind Sunburst	Set	LED			
52	Machine - LED Sun Outer	Set	LED			
53	Machine - LED Sun Inner	Set	LED			
55	Music - Underneath	Set	500 flood			
56	Music - Pipes front Fill	Set	Dichroic			
57	Music - P Lites Pipe Top	Set	P light			
58	Music - P Lites Pipe Bottom	set	P light			
59	Music - Musician OH	LX 3	650 Axial zoom	L202		
60	HAZER US	Floor				
VARI LITE						
101	Dimmer					
102	Hi Byte Pan					
103	Lo Byte Pan					
104	Hi Byte Tilt					
105	Lo Byte Tilt					
106	Edge					
107	Zoom					
108	Diffusion					
109	Blue					
110	Amber					
111	Magenta					
112	Rotating Gobo					
113	Gobo Index - Hi Byte					
114	Gobo Index - Lo Byte					
115	Frame 1A					
116	Frame 1B					
117	Frame 2A					
118	Frame 2B					
119	Frame 3A					
120	Frame 3B					
121	Frane 4A					
122	Frame 4B					
123	Rotate Frame					
124	Focus Time					
125	Color Time					
126	Beam Time					
127	Control					

*Supplied by Patch