



THE BOY AND THE BAMBOO FLUTE

Contact List

Artistic Director - Dave Brown dave@patchtheatre.org.au

General Manager - Amanda Jones amanda@patchtheatre.org.au

General Manager – Belinda McQueen belinda@patchtheatre.org.au



Inspired by the folklore and cultural traditions of Vietnam and combining drama, martial art, mime, music and dance, "The Boy the Bamboo Flute" is a Vietnamese-Australian epic adventure story about a peasant boy and a princess, who overcome the destructive power of an evil demon with the aid of a bamboo flute and their friends - a dolphin, a butterfly and a hawk.

Exploring themes of friendship, separation, loss, courage and the meaning of strength via myth and fairytale, the production is sparse in language, musically rich and visually beguiling, appealing to children and adults.

"The Boy the Bamboo Flute" has been presented at various international children's festivals to wide acclaim.

TECHNICAL SPECIFICATIONS

Freight

3 freight cases
total volume approx 5 cubic metres.
total weight approx 400 kilograms

Lighting

- 4 washes
- warm (Lee 153),
 - cool (Lee 201),
 - red (Lee 106)
 - break-up gobo
 - 30 circuits/.20 LXQ's
(lighting details attached)

Sound Requirements

- the sound is operated from behind the set by our stage manager
- headset communication to lighting operator are required.
 - a cueing CD player, amplifier
 - small mixer with sweepable mid range EQ
 - a pair of quality speakers on stands upstage.

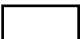
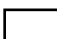
(the system must be capable of delivering a comfortable 200w each side with a good bottom end capability)

Other

We supply an industrial fan with switching device and transformer, which is operated by the stage manager from behind the set. It requires general power supply.

Patch Theatre Company
The Boy and the Bamboo Flute
 Schematic Ground Plan of Set

black curtain

mixing desk and CD player   electric industrial fan

1.5 metres

Vietnamese drum

masking

masking

6 metres

= black wool flats x 4

+800mm

+400mm

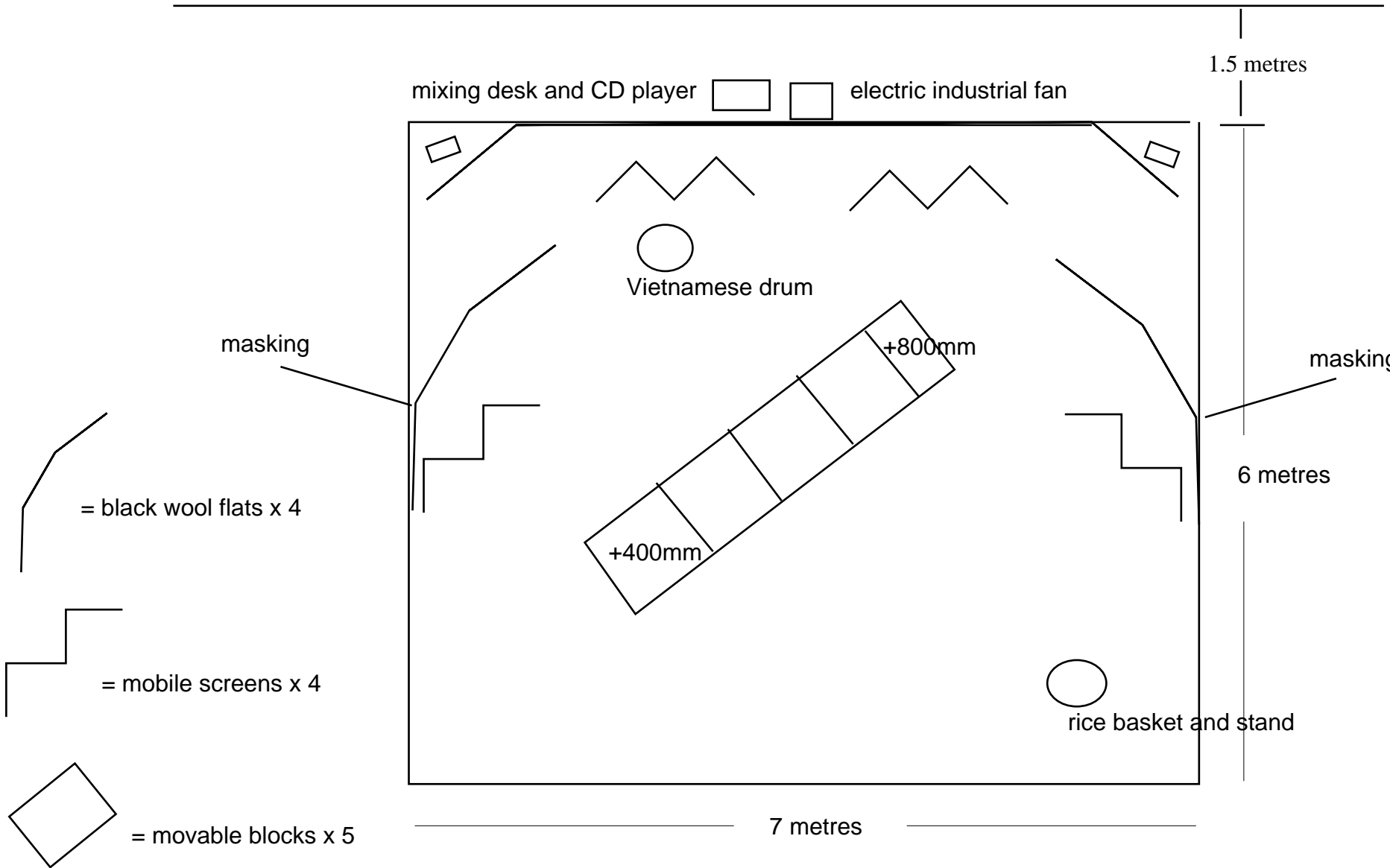
= mobile screens x 4

rice basket and stand

7 metres

= movable blocks x 5

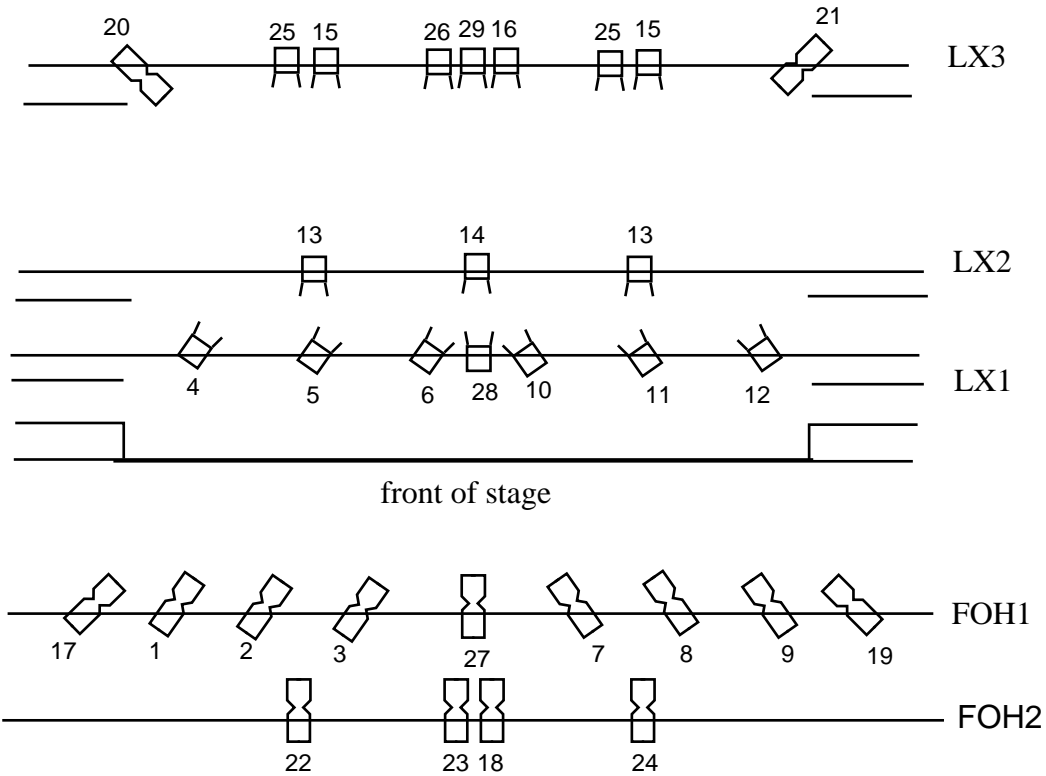
AUDIENCE



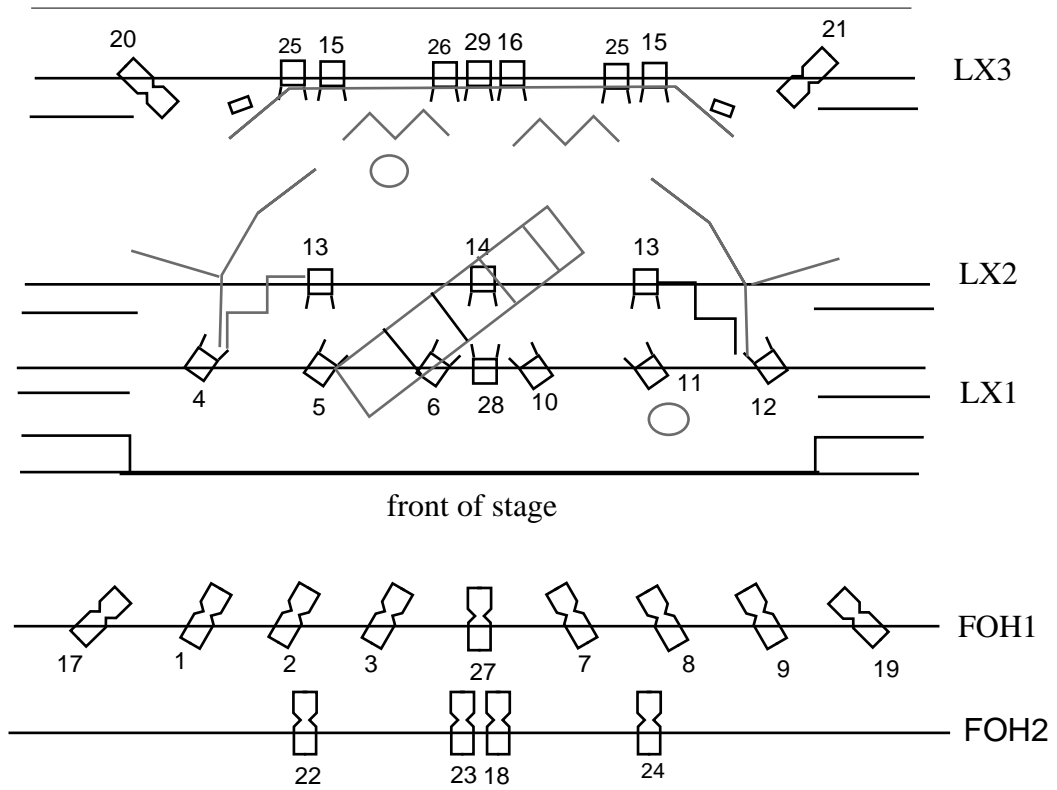
The Boy and the Bamboo Flute

Schematic Lighting Plan

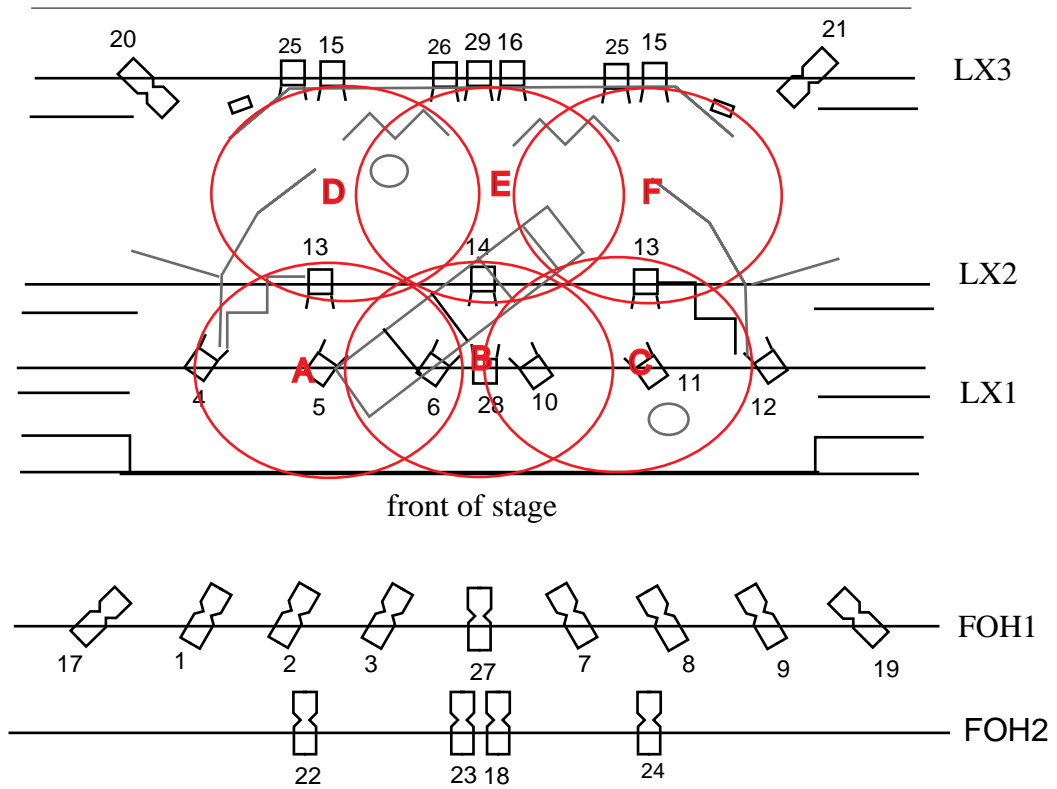
(numbers refer to lantern schedule)



The Boy and the Bamboo Flute
Patch Theatre Company
Lighting Rig/Ground Plan



The Boy and the Bamboo Flute
Patch Theatre Company
Lighting Areas - as per Lantern Schedule



Lamp	Colour	Soft Patch	Hard Patch	Bar Patch
1k profile - FOH cool wash ds - A	Lee 201	1		
1k profile - FOH cool wash ds - B	Lee 201	2		
1k profile – FOH cool wash ds - C	Lee 201	3		
1k profile – FOH cool wash us - D	Lee 201	4		
1k profile – FOH cool wash us - E	Lee 201	5		
1k profile – FOH cool wash us - F	Lee 201	6		
1k profile – FOH warm wash ds - A	Lee 153	7		
1k profile – FOH warm wash ds - B	Lee 153	8		
1k profile – FOH warm wash ds - C	Lee 153	9		
1k profile – FOH warm wash us - D	Lee 153	10		
1k profile – FOH warm wash us - E	Lee 153	11		
1k profile – FOH warm wash us - F	Lee 153	12		
1k fresnel x 2 – cool back wash ds – A/C	Lee 201	13		
1k fresnel – cool back wash dsc - B	Lee 201	14		
1k fresnel x 2 - cool back wash us D/F	Lee 201	15		
1k fresnel - cool back wash usc - E	Lee 201	16		
1k profilespot – forest special front OP	Gobo	17		
1k profile spot – forest special front C	Gobo	18		
1k profile spot – forest special front P	Gobo	19		
1k profile spot – forest special back OP	Gobo	20		
1k profile spot – forest special back P	Gobo	21		
1k profile spot – demon special foh	Lee 106	22		
1k profile spot – demon special foh	Lee 106	23		
1k profile spot – demon special foh	Lee 106	24		
1k fresnel x 2 – demon backwash A&D/C&F	Lee 106	25		
1k fresnel – demon backwash B/E	Lee 106	26		
1k profile spot – storm special foh B/E	Lee 181	27		
1k fresnel foh B/E	Lee 181	28		
2k fresnel – storm special back B/E	Lee 181	29		

201 from OP side
153 from P side