

A woman in a blue dress and a red and white striped long-sleeved shirt stands on a stage, holding a small glowing object and looking up with her hands raised. She is illuminated by a bright blue spotlight. In the background, a large audience of children and adults is seated in a dark room, many holding small glowing objects that create a bokeh effect. Green laser beams cut through the dark space from the top right. The overall atmosphere is magical and celebratory.

PATCH

2023 ANNUAL REPORT

ACKNOWLEDGEMENT OF COUNTRY

Patch Theatre acknowledge that we work, create, and play on Kurna Yerta.

We acknowledge and pay respect to the Traditional Owners of the Country our work is presented on,
and to all First Nations people and Elders past, present, and emerging.

Always was, always will be, Aboriginal land.



CONTENTS



I Wish... Photo: Andrew Beveridge

2023 Highlights	4
Vision Statement	5
Leadership Report	6
Achievements	10
Artistic Rationale and Program Introduction	12
2023 Program – In-Theatre/Installation/In-School	
<i>I Wish...</i>	14
<i>Sea of Light</i>	16
<i>ZOOM</i>	18
<i>Spark</i>	20
Installations – <i>Mirror Mirror & Lumen</i>	22
Creative Developments –	24
<i>Superluminal, Spark, Wonderverse</i>	
2023 Activities	
Summary	26
Training and Industry Engagement	26
Marketing and Publicity	27
Education	27
Patch Team and Board	28
2023 Statistics	30
Patch Theatre History	31
Company Artists and Associates	32
Patch Productions	35
Education Engagement 2023	36
Financial Report	40
Acknowledgements	54

2023 HIGHLIGHTS

56,229
AUDIENCE

307
PERFORMANCES
126% INCREASE ON 2022

235
SA SCHOOLS
54% INCREASE ON 2022

129
DAYS OF INSTALLATIONS

107
REGIONAL SA SCHOOLS

99
VENUES

49
WEEKS TOURING





VISION STATEMENT

To deliver world-class theatre across the globe which captures the curiosity of a child, wraps it in magic and ignites imagination.

Patch Theatre creates performances that centre the way children see the world, acknowledging the relevance of their thinking with stories that promote imagination, wonder and discovery.

Our works celebrate big ideas and explore some of the world's inexplicable questions from a child's point of view.

Patch Theatre is dedicated to the creation, presentation, and touring of high-quality arts experiences for 4–8 year old children and their families.

LEADERSHIP REPORT

As we wrap up the year, it is a chance to reflect on the wonderful achievements of Patch's program in 2023. We have excelled in delivering across all three program streams – Installations, In-Theatre and In-School – reaching an audience of over 56,000. On regional, national and international stages, there has been strong demand for Patch's innovative style of work made for a range of presentation options.

Patch undertook an incredible 49 weeks of touring across the year, presenting at 41 venues and 58 schools. 235 South Australian schools participated in Patch programs – a 54% increase from the previous year, and 41% of those schools are classified as experiencing disadvantage, delivering on our commitment to ensuring access for all young people.

This was made possible thanks to generous support from our funding bodies – the South Australian Government through the Department for Education under Minister for Education, Training and Skills, Hon. Blair Boyer MP; Arts South Australia; and the Australian Government through Creative Australia, its principal arts investment and advisory body. We also thank our many donors and philanthropic supporters for helping us to share the magic of live performance with young audiences. Our ongoing partnership with Hither & Yon continues to spark joy at our events.

The Patch team has been so dedicated and hardworking, it's a testament to their passion and can-do attitude to have presented such a large and successful season. Joining the nine office-based staff, project specific teams extended Patch's artistic capacity, with 53 artists, creatives and crew bringing the program to life. Four new Board members, including the appointment of Liz Hawkins to Chair, contributed a new expertise



and energy to the Board of Directors. Moving to our new premises hosting office, set storage, build and rehearsal space has been a vast improvement to the workflow between the administration and creative teams, uniting creative play across our operations.

As we celebrate the achievements of the past year, it is important to acknowledge the profound impact that arts experiences have on young people in our society. Now more than ever, children need opportunities for creativity, expression and connection. Creative engagement not only provides a platform for artistic exploration but also fosters empathy, critical thinking, and social skills that are essential for navigating the complexities of the world.

LEADERSHIP REPORT

Chair Liz Hawkins

As I complete my first year as Chair, it has been evident that Patch's artists, creatives and staff have demonstrated incredible passion, creativity, and dedication to push the boundaries of imagination and inspire audiences. Their unwavering commitment has not only sustained the organisation but has also propelled us forward in our mission to create, present, and tour high-quality arts experiences for 4–8 year old children and their families.

Thanks to the ongoing support from our funders, Patch continues to inspire children and nurture the next generation of artists and audiences.

I would also like to extend my gratitude to the Patch Board of Directors for their time and passion in delivering Patch's vision. Together, we will continue to inspire, educate and entertain young people for years to come.



Artistic Director Geoff Cobham

2023 taught me to value our team and appreciate our audience.

Following four years of prolific output, 2023 was a year to develop our leadership skills and adjust our staffing and structures. We are now in a much stronger position to deliver our ambitious programs without overloading our amazing people.

Planning for the next five years led me to reflect on what we do at Patch and how we do it. Of course, it all comes back to our audience – 4–8 year old children and their families and educators.

For the majority of our audience, engaging with Patch will be their first professional arts experience, and this is a serious responsibility. We have learned to never take children's input for granted and constantly remind ourselves that they are at the centre. Children are excellent storytellers and experts at play, so in all aspects of our work, we consider the child's point of view and their particular tangential creative thinking. In considering the way we invite children to engage in our work, we model non-verbal behaviours and trust in their instincts, rather than instructing.

I have also re-learned that making theatre is all about the casting! We take great care in putting together teams of artists and technicians, acknowledging that each show is unique and requires a bespoke set of creators. The temptation is to keep using the same successful teams, but each project has different needs. I have been careful to make sure our shows are different in design and scale, while maintaining Patch's distinctive style, resulting in works that range from intimate in-classroom experiences to giant eight-metre-high play spaces. This places Patch as a leader in the creation of design-led children's theatre experiences.

LEADERSHIP REPORT

Creative Producer Sasha Zahra

September 2023 marked one year as Creative Producer at Patch and as I reflect on the company's amazing program and achievements, I have learnt that our staff, artists and audiences – 'our people' – are at the core of our work and all equally pivotal in Patch's success.

I have enjoyed responding to and supporting Geoff's creative vision and actively inviting culturally diverse and First Nations artists into Patch's fold as new collaborators across the three streams of the program. Finding pathways to connect my established creative networks with Patch has been a pleasure and I look forward to continuing this journey into the future.

In the new reality of touring, the adaptable scalability of Patch's work has been key to attracting a huge diversity of presenting partners – from major festivals and venues across the country, to remote regional schools throughout SA, and numerous international venues. We increased accessibility for our young audiences, regardless of geographic location.

I am enjoying working in a fast-paced, adaptable and creative environment that is both challenging and highly rewarding and I look forward continuing to collectively imagining the next chapter of the company.

"I don't believe in magic but now I saw that show... maybe I do..." Child (ZOOM)

General Manager Penny Camens

2023 was a time portal – out of the travel restrictions of the past few years, into a new home in Kent Town, building Patch's team and devising a new strategic plan to get us all the way to 2028. Patch productions have a life cycle of many years (from initial concept and securing funding, the creative development and premiere, through to tour building), so a plan across five years is vital to guide our work in juggling the current and future needs.

It has been a particular pleasure to partner with several foundations, inspired by the vision of Patch's programs reaching more South Australian regional and remote children. Delivering Spark in schools to more than 4,000 students across regional SA was made possible thanks to the generous support of James & Diana Ramsay Foundation, FWH Foundation, John T Reid Charitable Trust, Lang Family Foundation, and Thyne Reid foundation.

Amongst the many grant applications and acquittals involved in a publicly funded not-for-profit organisation, it has been so enriching to connect with a variety of artists and collaborators who share our passion for creating high-quality arts experiences for young audiences.



ACHIEVEMENTS

2023 WAS ANOTHER HUGE YEAR FOR PATCH! OVER 56,000 CHILDREN AND THEIR FAMILIES EXPERIENCED A PATCH SHOW ACROSS 99 VENUES.

WE MOVED TO A NEW HOME!

We relocated our home-base to a fabulous new Kent Town location at 63 King William Street. Our multi-use space features a workshop, rehearsal space, and set storage, along with administration offices. The new space has improved our day-to-day work lives, saving time and allowing us to create and play whenever inspiration strikes.



Patch team at Kent Town space. Photo: Andrew Beveridge

WE RECEIVED 4-YEAR FUNDING!

In 2023 we devised a new strategic plan for 2025–28 to apply for the renewal of our 4-year funding through the newly rebranded Creative Australia (formerly Australia Council for the Arts). We were pleased to hear in December that our funding application was successful, amongst a significant increase to the number of organisations funded nationally under the Federal Government's Revive cultural plan.

WE WELCOMED FOUR NEW BOARD MEMBERS

Patch's new Chair Liz Hawkins commenced at the beginning of February, when former chair Janet Worth retired after nine generous years leading the Board. Three further board members: Jason Dunstone, Peter Campbell and Anne-Marie Shin finished their tenure at the April Annual General Meeting. Three new members joined the Board to fill these vacancies: Reena Costello, Deb Hughes, and Dearna Newchurch.

I WISH... VISITED MELBOURNE

Our acrobatic adventure *I Wish...* impressed family audiences at Arts Centre Melbourne in January. A spectacular start to our 2023 season.

ZOOM TRAVELLED THE US AND AUSTRALIA

ZOOM continued to wow audiences across the globe as it was performed in the US, Canada, and South Australia. The touring cast performed 93 times and over 25,000 audience members shared their dark, danced, and helped our lost star return home.

SEA OF LIGHT SHINED ACROSS AUSTRALIA

Interactive installation *Sea of Light* impressed audiences across the country this year as over 16,000 children drew, explored, and delighted in the experience. More than 5,500 of these children saw *Sea of Light* in regional areas, from Ulverstone in Northern Tasmania to Cairns in Far North Queensland.

In South Australia we impressed families at DreamBIG Children's Festival in Adelaide and SALT Festival in Cummins, brightened SA libraries at Lit for Life festival, visited Hawthorndene Primary School as part of their NAIDOC week event, and invited patients at the Women's and Children's Hospital to explore *Sea of Light* in the Starlight Room.

When the installation was presented at SALT Festival in Cummins on the Southern Eyre Peninsula, visitor numbers were more than four times the town's population of 500 people!



Spark: Once Upon a Jar Photo: Roy VanDerVegt

SPARK TRAVELLED THE STATE – LIMESTONE COAST, RIVERLAND, EYRE PENINSULA AND ADELAIDE

This year, our in-school experience *Spark* travelled further than we could have imagined. We performed *Glow & Tell* and *Once Upon a Jar* to over 4,000 children at 51 schools across the state, including Yalata Anangu School in Aboriginal Community Yalata – 1000km from Adelaide.

ARTISTIC RATIONALE GEOFF COBHAM

I have enormous respect for our young audience and marvel at their ability to be in the moment and, because of this, involve them in all aspects of our devising process and the performance itself. In our productions they are active participants, before, during and after the show. I also enlist the help of a broad range of artistic colleagues – who are themselves leaders in their fields – in the making of the work. My making process is truly collaborative with the direction of the show in the hands of experienced but adventurous theatre makers. We are also fortunate to work with many emerging artists, designers, and technicians and are conscious of our role in the development and maintenance of a thriving and ambitious arts sector.

Since 2019, our design-led focus to new work has resulted in visually stunning, accessible, intimate and large-scale works created for inter-generational audiences, in theatres and beyond. Patch's current repertoire of installations, in-school program and in-theatre works are all structured to actively place the child at the centre of the experience. We engage audiences in the magic of theatre where analog meets digital while maintaining a deep human connection. In this, we are guided by the Australian Curriculum Early Years Learning Framework, which has Belonging, Being & Becoming at its heart. Our work is mostly language sparse, allowing us to better connect with our culturally diverse audiences. We know they do not require a linear narrative from us, they prefer to make their own stories and we actively give them the space to do this.



Sea of Light Photo: Matt Byrne



2023 PROGRAM INTRODUCTION

2023 was a roaring return to touring, with all three of Patch's program streams: In-Theatre, Installation and In-School achieving significantly larger programs due to increased demand.

While 2023 focussed on the touring of existing works in repertoire – *I Wish...*, *ZOOOM*, *Sea of Light*, and *Spark* – there was still much creative development of new work. Both *Superluminal* and *Wonderverse* undertook creative developments and will premiere to schools and family audiences in 2024.

On the following pages you will see our 2023 touring highlights by show.



IN-THEATRE



INSTALLATION



IN-SCHOOL



IN-THEATRE

1,938
ATTENDEES

6
PERFORMANCES



I WISH...

An acrobatic adventure exploring all the things we could be.

Creators Geoff Cobham, Darcy Grant • **Composers** Luke Smiles, Will Spartalis • **Designer/Maker** Michelle 'Maddog' Delaney

Technical Designer Alexander Hatchard • **Costume Designer** Renate Henschke • **Animation** Luku

Cast/Makers Zoë Dunwoodie, Lisa Goldsworthy, Wakara Gondarra, Simon McClure

2023 Touring Party: Cast Zoë Dunwoodie, Lisa Goldsworthy, Wakara Gondarra, Simon McClure

Stage Manager Taylor Dawson • **Technical Manager** Alex Hatchard

I WISH...

People are made of stuff – good stuff and bad stuff, happy and sad stuff, stinky, odd, boring, dangerous, funny, sparkling potions of stuff. People also have secret ingredients – what could your secret ingredient be?

I Wish... is an exciting collaboration between Patch Theatre and renowned South Australian circus company Gravity & Other Myths. Through physical theatre, stunning visuals and a healthy dose of humour, explore our differences to reveal the magic of individuality.

Gravity & Other Myths is an Australian circus company pushing the boundaries of contemporary circus. Their work utilises an honest approach to performance to create shows with a focus on human connection and acrobatic virtuosity.

“I Wish... is a visually stunning spectacle of lights, circus feats and self-exploration.” *Play & Go*

“My kids LOVED this... almost as much as I did! Highly recommend.” Parent



Photo: Andrew Beveridge

DATES	PERFORMANCES	VENUE	ATTENDEES
18–21 Jan	6	Arts Centre Melbourne, Melbourne VIC	1,938



INSTALLATION

16,274
PARTICIPANTS

93
DAYS



SEA OF LIGHT

Paint a voyage in light.

Creators Geoff Cobham, Michelle 'Maddog' Delaney • **Boat Maker** Wendy Todd, Jimmy Dodd • **Composer** Jason Sweeny
Artist Elizabeth Close • **Technical design** Alex Hatchard, James Oborn

2023 Creatives and Crew: Touring Party Edgell Junior Edgell, Evyenia Stefanidis

Crew Wendy Todd, Axel Andrews, Shaun Goudy, Lisa Hill • **Technical Team** Darian Tregenza, Alex Hatchard, James Oborn

SEA OF LIGHT

Embark on a journey of light and imagination in this illuminating interactive installation by Patch Theatre. With a UV torch as your paintbrush, paint and stencil your own voyage and steer ships that leave glowing paths of light in their wake.

As you explore *Sea of Light*, artworks by Aboriginal Contemporary Visual Artist Elizabeth Close are painted in light across the sea floor. These paintings speak to the connection between land and sea, the earth and waterways and are informed by the diversity of the Australian landscape. They also reflect the deep relationship that Aboriginal and Torres Strait Islander people in Australia have with Country.

Sea of Light brings together magical light and a gentle soundscape to create a unique adventure for the whole family.

“Sea of Light was hugely successful, with a constant long line of people waiting to experience the activity.” Presenter

“Awesome. Cool. The coolest thing ever!” Child

DATES	DAYS	VENUE	PARTICIPANTS
14–29 Jan	16	Cardinia Cultural Centre, Pakenham VIC	2,880
9–19 Mar	10	Ten Days on the Island, Ulverston TAS	632
11–18 Apr	8	HOTA, Gold Coast QLD	796
21–30 Apr	10	SALT Festival, Cummins SA	1,800
5–15 May	10	South Side Festival, Frankston VIC	1,576
17–27 May	10	DreamBIG Children’s Festival, Adelaide SA	2,625
20–21 May	1	Cairns Children’s Festival, Cairns QLD	1,400
10 Jun	1	Marion Cultural Centre, Marion SA	121
6 Jun	1	Payinthei, Prospect Library, Prospect SA	195
8 Jun	1	The Parks Theatre, Angle Park SA	236
29 Jun	1	Hawthorndene Primary School, Hawthorndene SA	750
3–6 Aug	3	Horsham Town Hall, Horsham VIC	617
15–20 Aug	6	Darwin Festival, Darwin NT	1,078
26–30 Sep	5	AWESOME Festival, Perth WA	623
15 Oct	1	The Round, Nunawading VIC	600
11–18 Oct	9	Women’s and Children’s Hospital, Adelaide SA	345



IN-THEATRE

25,052
ATTENDEES

93
PERFORMANCES



ZOOOM

A lost star finds its way home.



Creators Geoff Cobham, Dave Brown, Roz Hervey, Temeka Lawlor, Angus Leighton • **Composer** Jason Sweeney
Designer Michelle 'Maddog' Delaney • **Technical Designers** Chris Petridis, Alexander Hatchard • **Animation** Luku
2023 Touring party: Cast Angus Leighton, Temeka Lawlor, Liam Ormsby • **Touring Company Manager** Briony Hunt
Technical Manager Alex Hatchard

ZOOOM

Unable to sleep, a child goes on an imaginary adventure throughout the universe. Using original music, lasers and projections, ZOOOM brings the audience on an adventure to help a lost star find its way home.

Inspired by iconic children's book *Harold and the Purple Crayon*, ZOOOM channels the same philosophy – a child who makes sense of their world through art.

ZOOOM begins at home or in the classroom, as we invite our audience to “bring a piece of dark” to the show. Upon arrival, their dark is exchanged for their own personal light – a little spark that will keep them safe and guide them through the interactive performance.

Captivating and heartfelt, ZOOOM is an immersive performance that explores what dreams are made of.

“My almost-three-year-old had the TIME OF HER LIFE. It was engaging, such fun, and the perfect length.” Parent

“This was an inspiring performance, especially created to spark childhood-like imagination!” Teacher

DATES	PERFORMANCES	VENUE	ATTENDEES
6–10 Apr	6	Comstock Community Auditorium, Kalamazoo USA	3,256
14–15 Apr	2	Winter Centre, Millersville University, Millersville USA	1025
26 Apr – 7 May	20	Manitoba Theatre for Young People, Winnipeg Canada	4587
11–14 May	7	Ottawa Children's Festival, Ottawa Canada	833
20–26 May	4	Junior Festival, Toronto Canada	727
30 May – 4 Jun	8	Waterfront Theatre, Vancouver Canada	1,794
1–19 Aug	30	Adelaide Festival Centre, Adelaide SA	6,510
22–25 Aug	8	Hopgood Theatre, Noarlunga SA	2,747
29 Aug	2	Chaffey Theatre, Renmark SA	853
1 Sep	2	Sir Robert Helpmann Theatre, Mount Gambier SA	852
5 Sep	2	Northern Festival Centre, Port Pirie SA	817
7 Sep	2	Middleback Theatre, Whyalla SA	958

Four performances were cancelled at Flynn Performing Arts Centre, Burlington USA

62 South Australian schools and preschools accessed our discounted equity tickets to attend ZOOOM bringing 3,248 students from socio-economically disadvantaged schools (IoED 1–4 or preschool equivalent) to the theatre – 34% of all students.



IN-SCHOOL

4,493
ATTENDEES

207
PERFORMANCES



SPARK

Bringing the magic of theatre to the classroom.

Spark is a series of portable, interactive arts experiences, designed in collaboration with artists to deliver innovative creative learning experiences in schools. *Spark* inspires and engages students, igniting creativity while providing a live performance experience and innovative hands-on activities. *Spark* removes barriers to arts access by bringing arts experiences directly to the classroom.

Over the past two years, *Spark* has been performed more than 200 times across South Australia.

Creators Geoff Cobham, Michelle 'Maddog' Delaney, Kerry Reid

Creators/performers Stephen Sheehan, Evyenia Stefanidis, Edgell Junior Edgell, Astrid Pill

2023 Touring Party: Stephen Sheehan, Evyenia Stefanidis, Edgell Junior Edgell, Astrid Pill

SPARK: ONCE UPON A JAR

Choose your own adventure in this whimsical storytelling experience.
A special visitor arrives in the classroom with a suitcase full of old gifts – some mysterious jars from birthdays long past.

Each jar contains a distinct smell and countless story possibilities. Students shape the narrative, bringing their far-fetched ideas to life, before joining Stephen on a treasure hunt to find the most mysterious smell of all.

SPARK: GLOW & TELL

An interactive light-filled storytelling adventure.
Blending the magic of light and simplicity of storytelling, students are placed at the centre of this magical interactive experience. Using UV light, in a custom-built tent, the classroom is transformed into an intimate performance space, where stories and imagined worlds come alive as glowing drawings appear on the walls and floor.

These stories are steeped in culture and language, offering an engaging approach to exploring these themes in the classroom.



Spark: Once Upon a Jar Photo: Roy VanDerVegt

“Thank you so much for your generosity! Being a country school we are not always able to access these kinds of programs.”
Teacher

“I wish we could have it here every day!” Child

“Can you come again four more times?” Child

LOCATION	VENUE	PERFORMANCES	ATTENDEES
Metro	23 schools and libraries	49	1,265
Regional	44 schools and libraries	158	3,228

Including seven metro and two regional libraries.
32 of these sites were visited for the first time by Patch.
5 schools we visited were in very remote locations and for many of their 255 students *Spark* was their first experience of live performance.



9,472
PARTICIPANTS

42
DAYS

INSTALLATION TOURING PROGRAM





MIRROR MIRROR

A kaleidoscope of infinite possibility

Mirror Mirror takes you into the heart of disco ball and lets you flip the light switch, literally. Travel through a reflective tunnel and step inside an intimate dome where every surface is a gleaming mirror. Journey to infinity and back again as you get lost in a kaleidoscopic dream.

Creators Geoff Cobham, Michelle ‘Maddog’ Delaney



LUMEN

A dance of light and mirrors

Patch creators Geoff Cobham and Michelle Delaney designed *Lumen* – a lighting installation for the Illuminate Adelaide bar on North Terrace. *Lumen* is a linear chandelier of mirror shards that reflect ever changing beams of light.

Creators Geoff Cobham, Michelle ‘Maddog’ Delaney

INSTALLATION	DATES	DAYS	VENUE	PARTICIPANTS
Mirror Mirror	10–27 Aug	16	Darwin Festival, NT	4,000
Mirror Mirror	9–19 Mar	10	Ten Days on the Island, Ulverston TAS	632
Lumen	7–23 Jul	16	Illuminate Adelaide, Adelaide SA	3,840

CREATIVE DEVELOPMENTS

SUPERLUMINAL

We spent six weeks developing our new interactive installation *Superluminal* to premiere at the South Australian Museum in 2024.

Superluminal will blend bold visual design, collaborative storytelling and interactive play to create an engaging installation. Guided by performers, children are invited to explore light, time and the wonders of nature, fostering a sense of magical connection and belonging in the world.

Creatives involved: Geoff Cobham, Michelle 'Maddog' Delaney, Zoë Barry, Jimmy Dodd, Alex Hatchard

SPARK

A team of artists continued to explore new ideas for our in-school *Spark* program, with further developments to come. During 2023, we have increased the pool of artists delivering our in-school program to feature a culturally diverse team including Ni Vanuatu and Greek-Australian artists and will continue adding to this program.

Creatives involved: Geoff Cobham, Michelle 'Maddog' Delaney, Stephen Sheehan, Edgell Junior Edgell, Evyenia Stefanidis, Kerry Reid, Astrid Pill, Ellen Steele, Tessa Leon



Spark: Glow & Tell Photo Tony Lewis



WONDERVERSE

Wonderverse is set to be a grand installation created by an exceptional line up of creatives. *Wonderverse* will take children on an innovative journey through a universe of light. The new work will feature Geoff Cobham's exceptional lighting and epic tunes by DEM MOB.

2023 was the beginning of the creative development process and included building the creative team and testing design concepts over ten weeks.

“Trading on my love of existential awe, *Wonderverse* seeks to provide a playground for children to explore the collision of science and art that is at the core of all our work. This show has lots of technology, but the ideas remain simple, just much bigger.” Geoff Cobham

Creatives involved: Geoff Cobham, Michelle ‘Maddog’ Delaney, Elisha Umuhuri and Jontae Dare from DEM MOB, Darian Tregenza

Commissioned by the University of Adelaide for their 150th Anniversary celebrations, *Wonderverse* is created in collaboration with the Children’s University, musicians and composers from the Centre for Aboriginal Studies in Music (CASM) and involves participation of children throughout the development.

OTHER CREATIVE DEVELOPMENTS

Our in-repertoire works continued to evolve, including the creation of a new soundtrack for *Sea of Light* by First Nations singer-songwriter Rob Edwards, to premiere in January 2024.

2023 ACTIVITY SUMMARY



INDUSTRY ENGAGEMENT

Patch staff participated in a range of conferences, festivals and events including:

- Imagine Festival, Edinburgh Scotland, Geoff Cobham
- Australian Performing Arts Market, Melbourne, Geoff Cobham and Sasha Zahra
- Major Festivals Initiative pitch sessions, Melbourne, Sasha Zahra
- Digital Adelaide conference, Adelaide, Nicole McKenzie
- APAX market pitching sessions, online, Penny Camens
- Performing Arts Market Seoul, Korea, Dr Boram Lee

Festival engagement

Patch productions were programmed at the following festivals:

- AWESOME Festival, Perth WA
- Cairns Children's Festival, Cairns QLD
- Darwin Festival, NT
- DreamBIG Children's Festival, Adelaide SA
- Junior Festival, Toronto Canada
- Ottawa Children's Festival, Canada
- SALT Festival, Eyre Peninsula SA
- Southside Festival, Frankston VIC
- Ten Days on the Island, Ulverstone TAS
- Vancouver International Children's Festival, Canada



ZOOM in Toronto



Marketing material



ZOOM teacher preview

MARKETING & PUBLICITY

- Sold out GP ZOOM Adelaide season and exceptional SA school sales – the ZOOM SA box office target was exceeded by \$37,000.
- Strong early school sales to 2024 shows *Superluminal* & *I Wish...* – at the end of 2023 4,871 tickets were booked across the two shows.
- 36 pieces of publicity across the year, including an ArtsHub feature, regional SA coverage of the *Spark* tour, and four TV appearances – three for *Sea of Light* and one for ZOOM
- We continued to roll out our updated branding, using the new style and some of our secondary colours to promote ZOOM.
- Our new and improved website is in full swing with additional learning activities and news (blogs) added regularly to increase visitation and improve SEO.

EDUCATION

Patch Theatre continued its commitment to educational enrichment with a series of successful events and resources:

- A Professional Learning session, with 33 educators in attendance, showcased Patch's innovative design-led approach for classroom engagement.
- The ZOOM Teacher Preview which drew 59 attendees, featured a performance of ZOOM, insightful commentary from the Minister for Education The Hon Blair Boyer MP, and a Q&A with Patch's Artistic Director Geoff Cobham.
- A post-show ZOOM Q&A session with Geoff Cobham was attended by ten students from Flinders Drama Department and 32 from Glenunga High School, facilitating Patch's engagement with the next generation of artists and students.
- New educational resources were developed for *Glow & Tell* and ZOOM, providing teachers with innovative tools to bring the arts into the classroom.



Patch team at end of year party

PATCH TEAM & BOARD

- Katya Shevtsov moved from Touring Company Manager to Operations Manager until June
- Briony Hunt was tour company manager for ZOOM in the US and Canada then took over as Operations Manager from June–December
- Krystle Aunger finished up in the role of Marketing & Development Manager in June
- Jaecinta Peddie joined Patch in a new role as Administration Coordinator overseeing office management, working across education and marketing, and assisting with the growth of *Spark* in schools program.
- Mirella Innocente finished up in finance after four years, with Darren Hunt appointed to the role.
- Damon Delaney started a new position of Program Coordinator late in the year.
- Patch's new Chair Liz Hawkins commenced at the beginning of February.
- Janet Worth retired after nine generous years leading the Board.
- Three further Board members: Jason Dunstone, Peter Campbell and Anne-Marie Shin finished their tenure at the April Annual General Meeting.

Three new members joined the Patch Board:

- Reena Costello, whose international experience across law and her regulatory compliance knowledge, enhances the board's understanding of legal complexities, operational management, and strategic decision-making.
- Deb Hughes, based in regional SA, brings a passion for the arts and creative approach to teaching, improving the board's understanding of the education landscape.
- Dearn Newchurch whose expertise in the intersection of art, science and innovation and support of First Nations led mixed-media art elevates the board's ability to drive meaningful cultural and artistic initiatives.



2023 STATISTICS

INSTALLATIONS

SHOW	VENUES	DAYS	PARTICIPANTS
<i>Sea of Light</i>	16	93	16,274
<i>Mirror Mirror</i>	2	26	4,632
<i>Lumen – Illuminate</i>	1	16	3,840
Creative Development – new works <i>Superluminal, Wonderverse</i>			
Total	19	129	24,746

IN-THEATRE

SHOW	VENUES	PERFORMANCES	ATTENDEES
ZOOM USA	6	47	12,222
ZOOM SA	6	46	12,830
<i>I Wish...</i> Arts Centre Melbourne	1	6	1,938
Total	13	99	26,990

IN-SCHOOL

SHOW	VENUES	PERFORMANCES	ATTENDEES
<i>Spark Metro</i>	23	49	1,265
<i>Spark Regional</i>	44	158	3,228
Creative Development – <i>Glow & Tell</i>			
Total	67	208	4,493

56,229
AUDIENCE

99
VENUES

307
PERFORMANCES

129
DAYS OF INSTALLATIONS

PATCH THEATRE'S HISTORY

PATCH THEATRE HAS BEEN MAKING AND TOURING PROFESSIONAL DEVISED THEATRE FOR 4–8 YEAR OLD CHILDREN AND THEIR FAMILIES FROM KAURNA YERTA, IN SOUTH AUSTRALIA SINCE 1972.

Patch creates world-class arts experiences that celebrate big ideas and explore some of the world's inexplicable questions from a child's point of view.

For fifty years, seeing a Patch production has been a family tradition, with more than two million children, parents and grandparents delighting in the 116 works Patch has created. Throughout the company's history its bold philosophy remained the same: to explore the world from a child's point of view, acknowledge the relevance of their thinking, and promote imagination, wonder and discovery.

The company was founded by Morna Jones OAM, a pioneer in Australian children's television and theatre, who believed that quality arts experiences were an essential part of childhood learning and development. With her husband Neil, their children, and the community, Jones converted a farmhouse in Brighton to a theatre to establish Little Patch Theatre where enriching puppetry productions for children and young people were presented.

Following Jones' death in 1982, Artistic Director Christine Anketell forged a relationship with Adelaide Festival Centre which saw the realisation of large-scale adaptations of children's literature bringing Patch a national profile. In 1986, Patch toured extensively throughout South Australia and internationally to Japan as part of the Okayama Art Summit.

Throughout the 1990s and 2000s, under the leadership of Artistic Director Dave Brown, touring remained a staple – Patch premiered work in South Australia and toured each year, including over 30 international tours. Patch's world-class repertoire of diverse, vibrant, and challenging theatre for young audiences continued to be the first experience of live performance for many children.

Since late 2018, Patch has been led by Artistic Director Geoff Cobham. A celebrated lighting designer, Cobham has connected Patch to a wider audience through developing interactive installations for families. These installations, alongside immersive theatre shows and in-school performances, bring Patch into a new era of performance for children.



Mirror Mirror Photo: Clare Hawley

COMPANY ARTISTS AND ASSOCIATES

PATCH STAFF

Senior Leadership team

Geoff Cobham, Artistic Director
Sasha Zahra, Creative Producer
Penny Camens, General Manager

Staff

Michelle Delaney, Creative Associate
Nicole McKenzie, Marketing & Communications Manager
Briony Hunt, Touring Company Manager/Operations Manager
Teena Munn, International Producer
Jaecinta Peddie, Administration Coordinator (*from May*)
Katya Shevtsov, Operations Manager (*until June*)
Krystle Aunger, Development & Marketing Manager (*until June*)
Mirella Innocente, Finance Officer (*until June*)
Darren Hunt, Finance Officer (*from June*)
Anthea Hagar, Publicist
Alex Hatchard, Technical Designer

BOARD

Liz Hawkins, Chair
Chris Drummond, Deputy Chair
Ben Opie, Treasurer
Reena Costello
Deborah Hughes
Dr Boram Lee
Dearna Newchurch
Amanda Wheeler
Peter Campbell (*until April*)
Jason Dunstone (*until April*)
Anne-Marie Shin (*until April*)

HONORARY LIFE MEMBERS

Dave Brown
Patrea Channon
Joan Clemow
Elspeth Harley
Rainer Jozeps
Helen Rose Morris
Bob Weatherly

PERFORMERS

Zoë Dunwoodie
Edgell Junior Edgell
Wakara Gondarra
Lisa Goldsworthy
Temeka Lawlor
Angus Leighton
Simon McClure
Liam Ormsby
Astrid Pill
Stephen Sheehan
Evyenya Stefanidis

MAKERS

Zoë Barry
Elizabeth Yanyi Close
Geoff Cobham
Robyn Cunneen
DEM MOB (Elisha Umuhuri, Jontae Dare)
Jimmy Dodd
Rob Edwards
Darcy Grant
Alex Hatchard
Edgell Junior
Elleni Karagiannidis
Luku Kuku
Temeka Lawlor
Tessa Leon
Seana O'Brien
James Oborn
Astrid Pill
Kerry Reid
Ellen Steele
Evyenya Stefanidis
Wendy Todd

INTERNATIONAL AGENT

James Weiner, Boat Rocker
Entertainment, USA

STAGE/TOUR MANAGERS

Taylor Dawson
Briony Hunt
Katya Shevtsov

TECHNICIANS

Alex Hatchard
James Oborn
Darian Tregenza

CREW

Axel Andrews
Gary Clark
Huey Cobham-Hervey
Matts Dellebeke
Dave Gibson
Shaun Goudy
Lisa Hill
Oscar Lewis
Amanda Morony

EDUCATION RESOURCES

Astrid Pill

PROFESSIONAL LEARNING

Daisy Brown
Astrid Pill
Anne-Marie Shin

GRAPHIC DESIGN

Carnival Studio
Imogen Landau
Stephanie Mitchell

PHOTOGRAPHY AND VIDEO

Matt Byrne
Tony Lewis
Roy VanDerVegt
Claudio Raschello

AUDIENCE TEST PILOTS (SPARK)

Goodstart Cowandilla
Hamley Bridge Kindergarten
Hamley Bridge Primary School
Norwood Primary School
Pooraka Primary School
Trinity Gardens Primary

FUNDING BODIES

Australia Council – 4 Year Organisational Funding

Andrew Donovan
Annette Madden
Tegan Richardson

Department for Education – Four Year Organisational Funding

The Hon. Blair Boyer MP
Prof Martin Westwell

Department of Premier and Cabinet – Arts South Australia

Jennifer Layther
Peter Grace



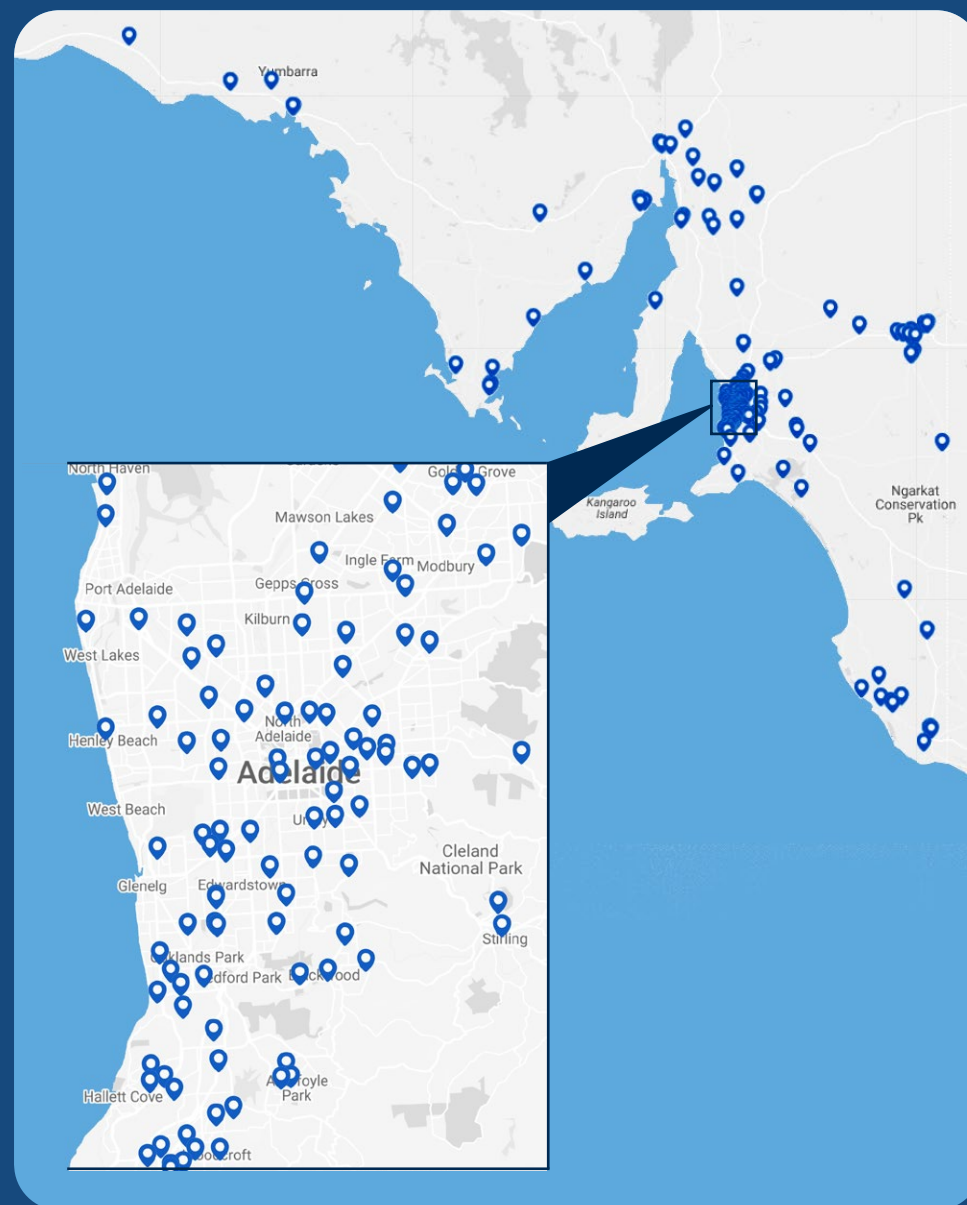
Sea of Light at the Women's and Children's Hospital. Photo: Matt Byrne

PATCH PRODUCTIONS 1972–2023

1. The Tingalary Bird
2. Thumbelina
3. Everything Under the Sun
4. The Silken Scroll
5. Shadrack's Journey
6. Benjamin and Brindletum
7. Melt the Wax Slowly
8. Hands Off the Clock
9. The Three Billy Goats Gruff
10. Who Murdered the English Language
11. And What Did Yer Get for Your Birthday
12. Power Play
13. Australian Born, Australian Bred
14. Everything Under the Sun
15. Mr Rumble's Jumble
16. Jeremy Jingle
17. A Splash of Yellow
18. A Secret Hiding Place
19. The Great Australian What?
20. Mr Cook-a-book's Sound Recipe
21. Patches
22. Pig Tales
23. Come Fly with Me
24. Wake the Night
25. The Billabong Circus
26. Bizzy, Dizzy, Daffy and Arthur
27. The Ballot's the Thing
28. Bowser Bill from Barren'ill
29. Son of Romeo
30. Getoutovit
31. Nothing's Sacred
32. Peacemaker
33. Bush Invaders
34. Treasure Island
35. Lost in Time
36. Gladys O'Conk and the Silly Robber
37. Dad is Yuk
38. The Soft Harry Show
39. 1983
40. Cinderella Says No
41. Kasperle and his Friends
42. If Only we had a Cat
43. The Happy Prince
44. Bound for South Australia
45. My Place
46. A.B.C.
47. Wilfrid Gordon McDonald Partridge
48. Set Your Mind on Wishing
49. The Ugly Duckling
50. You and the Law
51. The Man Whose Mother was a Pirate
52. Middleton Market
53. Tiny Pod and the Silver Wings
54. Space Demons
55. Illusions
56. Monkey See, Monkey Do
57. Melanie and the Night Animal
58. Aesop's Fables
59. The Secret Garden
60. When I was Young
61. Clucky & the Vegetable Matter
62. Evensong for Antarctica
63. Beyond the Labyrinth
64. The Hobbit
65. Paula
66. Birds of the Moon
67. Once Upon a Ruby Red
68. The Search for Biffy's Head
69. Pigs Might Fly
70. The Red King
71. Rak Awin
72. On the Lake
73. Big Hand: Little Hand
74. The Littlest History of Theatre in the World
75. Galax-Arena
76. Kookookachoo
77. Puppy Love
78. Tjitjiku Inma
79. Respectable Shoes
80. Freckle: An Australian Fairy Story
81. The Boy and the Bamboo Flute
82. Radio Brainstorm
83. Each Beach
84. Granny and the Sea Monster
85. A Giant Sleeps...
86. Hyperactive
87. Visible Darkness
88. The Sea of Space
89. Postcards from Nanna
90. Who Sank the Boat
91. We Are Home Here – Centenary of Federation Song Cycle
92. No Joke!
93. Pigs, Bears and Billy Goats Gruff
94. Sharon, Keep Ya Hair On!
95. Wormhole!
96. Mr McGee and the Biting Flea
97. Emily Loves to Bounce
98. Special Delivery
99. The Fastest Boy in the World
100. The Happiest Show on Earth
101. Me and My Shadow
102. Little Green Tractor
103. Theo and the Lion
104. The Moon's a Balloon
105. Cranky Bear
106. Yo Diddle Diddle
107. Can You Hear Colour?
108. Firefly Forest
109. ZOOM
110. The Lighthouse
111. Sea of Light
112. I Wish...
113. Spark: Once Upon a Jar
114. Mirror Mirror
115. Home
116. Spark: Glow & Tell

EDUCATION ENGAGEMENT 2023

1. Aberfoyle Hub Preschool
2. Aberfoyle Park Campus Preschool
3. Adelaide North Special School
4. Adelaide West Special Education Centre
5. Alberton Primary School
6. Aldgate Kindergarten
7. Angaston Primary School
8. Ardtornish Children's Centre
9. Ascot Park Primary School
10. Baden Pattinson Kindergarten
11. Barbara Kiker Memorial Kindergarten
12. Barker Kindergarten
13. Barmera Kindergarten
14. Barmera Primary School
15. Beachport Primary School
16. Belair Jean Bonython Kindergarten
17. Black Forest Primary School
18. Blackwood Kindergarten
19. Booleroo Centre District School
20. Brentwood Drive Kindergarten
21. Brighton Primary School
22. Brinkworth Primary School
23. Burton Primary School
24. Calvary Kindergarten
25. Carlton School
26. Cedar College
27. Ceduna Area School
28. Challa Gardens Primary School
29. Charles Campbell College
30. Christian Brothers' College
31. Christies Beach Primary School
32. Christies North Kindergarten
33. Cobdogla Primary School
34. Coorara Primary School
35. Cowell Early Childhood Centre
36. Crafers Primary School
37. Cumberland Preschool Kindergarten
38. Curramulka Primary School
39. Darlington Primary School
40. Dorothy Hughes Kindergarten
41. Dover Kindergarten
42. Eden Hills Kindergarten
43. Elizabeth South Primary School
44. Elizabeth Vale School
45. Enfield Primary School
46. Faith Lutheran College
47. Fisk Street Primary School
48. Flaxmill Preschool
49. Fraser Park Primary School
50. Gabmididi Manoo Children and Family Centre
51. Garden College
52. Glenburnie Primary School
53. Glenunga International High School
54. Glossop Community School
55. Golden Grove Homestead Community Children's Centre

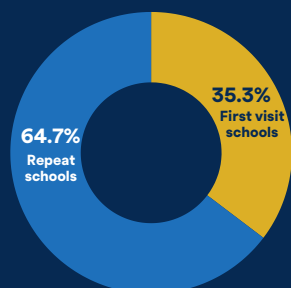
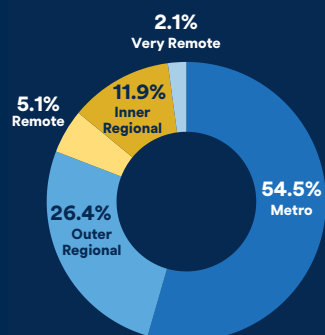
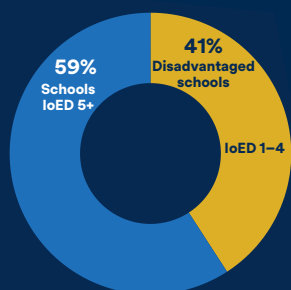


EDUCATION ENGAGEMENT 2023

- | | | | |
|---|--|--|--|
| 56. Goodstart – Cowandilla | 83. Lady Gowrie Child Centre Inc | 112. Morphett Vale Primary School | 140. Pasadena Kindergarten |
| 57. Goodstart – Smithfield | 84. Lake Wangary School | 113. Mount Barker Kindergarten Inc | 141. Pembroke School |
| 58. Gordon Education Centre | 85. Lake Windemere School | 114. Mount Barker Primary School | 142. Penong Primary School |
| 59. Grove Kindergarten | 86. Largs North Kindergarten | 115. Mount Burr Primary School | 143. Peterborough Primary School |
| 60. Gumeracha Primary School | 87. Laura Primary School | 116. Mount Gambier North Primary School | 144. Pimpala Kindergarten |
| 61. Hackham West Children's Centre | 88. Lincoln Gardens Primary School | 117. Murray Bridge North School | 145. Pinnacle College |
| 62. Hackham West School | 89. Lobethal Community Kindergarten | 118. Myponga Primary School | 146. Pinnaroo Primary School |
| 63. Hackney Kindergarten | 90. Lobethal Primary School | 119. Napperby Primary School | 147. Playford College |
| 64. Hallett Cove Karrara Kindergarten | 91. Lockleys Children's Centre | 120. Naracoorte South Primary School | 148. Plympton International College |
| 65. Hallett Cove Preschool | 92. Loxton Lutheran School | 121. Nature Play Family Day Care | 149. Plympton Primary School |
| 66. Hamley Bridge Kindergarten | 93. Loxton North School | 122. Newbery Park Primary School | 150. Plympton South Kindergarten |
| 67. Hamley Bridge Primary School | 94. Loxton Primary School | 123. Newland Park Kindergarten | 151. Poonindie Community Learning Centre |
| 68. Happy Valley Kindergarten | 95. Lucy Morice Kindergarten | 124. Ngura Yadurirn Children and Family Centre | 152. Pooraka Primary School |
| 69. Harvest Christian College | 96. Manor Farm Kindergarten | 125. Ngutu College | 153. Port Augusta West Childhood Services Centre |
| 70. Hawthorndene Primary School | 97. Marion Primary School | 126. Nicolson Avenue Primary School | 154. Port Lincoln Children's Centre |
| 71. Hills Christian School Early Learning Centre | 98. Marryatville Primary School | 127. Nido Early School, Pennington | 155. Port Lincoln Junior Primary School |
| 72. Hincks Avenue Primary School | 99. McDonald Park School | 128. Noarlunga Downs Primary School | 156. Port Lincoln Primary School |
| 73. Huntfield Heights School P-6 | 100. Meadows Primary School | 129. Norrie Stuart Childhood Services Centre | 157. Port Neill Primary School |
| 74. IQRA Islamic College of South Australia | 101. Melaleuca Park Primary School | 130. North Ingle School | 158. Port Noarlunga Primary School |
| 75. Jamestown Community School | 102. Melrose Primary School | 131. Norton Summit Primary School | 159. Port Pirie Community Kindergarten |
| 76. Jervois Primary School | 103. Memorial Oval Primary School | 132. Norwood Primary School | 160. Port Pirie West Children's Centre |
| 77. Kangaroo Inn Area School | 104. Meningie Area School | 133. O'Halloran Hill Kindergarten | 161. Prescott College Southern |
| 78. Kathleen Mellor Preschool Kindergarten | 105. Mercedes College | 134. O'Sullivan Beach Primary School | 162. Prince Alfred College |
| 79. Kilparrin Teaching & Assessment School & Services | 106. Millicent North Primary School | 135. Orroroo Area School | 163. Prince Alfred College ELC |
| 80. Kimba Area School | 107. Mitcham Preschool Centre | 136. Orroroo Kindergarten | 164. Quorn Area School |
| 81. Kirton Point Primary School | 108. Modbury Kindergarten | 137. Padthaway Primary School | 165. Ramco Primary School |
| 82. Koonibba Aboriginal School | 109. Monash Primary and Preschool | 138. Palmer Primary School | 166. Raukkan Aboriginal School |
| | 110. Montessori Children's Centre - McLaren Vale | 139. Paradise Kindergarten | 167. Rendelsham Primary and Preschool School |
| | 111. Morgan Primary School | | |

EDUCATION ENGAGEMENT 2023

SCHOOLS DEMOGRAPHICS



168. Renmark Children's Centre
169. Renmark North School
170. Renmark Primary School
171. Renmark West PreSchool
172. Renown Park Children's Centre
173. Reynella East College
174. Reynella Primary School
175. Reynella South Preschool
176. Risdon Park Primary School
177. Rivergum Christian College
178. Riverland Special School
179. Rose Park Primary School
180. Saint Ignatius' College: Junior School
181. Saint Michael's College Junior School
182. Seacliff Community Kindergarten
183. Seaview Downs Kindergarten
184. Seaview Downs Primary School
185. Snowtown Primary School
186. Southern Vales Christian College Morphett Vale
187. St Albert's Catholic School
188. St Francis Xavier's Regional Catholic School
189. St Gabriel's School
190. St John the Baptist Catholic School
191. St Joseph's Parish School - Gladstone
192. St Joseph's School - Clare
193. St Joseph's School - Peterborough
194. St Joseph's School - Renmark
195. St Margaret's Kindergarten - Woodville
196. St Martin de Porres School
197. St Mary Magdalene's School
198. St Mary's College
199. St Michael's Lutheran Primary School
200. St Peter's Girls' School
201. St Therese School
202. Stansbury Primary School
203. Star of the Sea School
204. Stirling District Kindergarten
205. Stirling North Childhood Services Centre
206. Stirling North Primary School
207. Sturt Street Community School
208. Sunrise Christian School
209. Suttontown Primary School
210. Taillem Bend Primary School
211. Tenison Woods College
212. The Hills Christian Community School
213. Torrensville Primary School
214. Trinity Gardens School
215. Unley Primary School
216. Vale Park Pre-school
217. Valley View Kindergarten
218. Victor Harbor Primary School
219. Waikerie Primary School
220. Warradale Community Children's Centre
221. Wasleys Primary School
222. West Lakes Shore Kindergarten
223. Westminster School
224. Whyalla Special Education Centre
225. Whyalla Stuart Primary School R-6
226. Whyalla Town Primary School
227. Wilmington Primary School
228. Woodcroft College
229. Woodcroft Heights Children's Centre
230. Woodend Primary School
231. Woodside Primary School
232. Wynn Vale School
233. Xavier College, Evanston Campus
234. Yahl Primary School
235. Yalata Anangu School



AUDITOR'S INDEPENDENCE DECLARATION UNDER SECTION 60-40 OF THE AUSTRALIAN CHARITIES AND NOT FOR PROFITS COMMISSION ACT 2012 TO THE DIRECTORS OF THE BOARD OF MANAGEMENT OF PATCH THEATRE COMPANY INCORPORATED

I declare that, to the best of my knowledge and belief during the year ended 31 December 2023 there have been:

- no contraventions of the auditor independence requirements as set out in the *Australian Charities and Not-for-profits Commission Act 2012* in relation to the audit; and
- no contraventions of any applicable code of professional conduct in relation to the audit.



William Buck (SA)
ABN 38 280 203 274



Grant Martinella
Partner

Adelaide, 23 April 2024.

Patch Theatre Company Incorporated

Independent auditor's report to members

Report on the Audit of the Financial Statements

Opinion

We have audited the financial report of Patch Theatre Company Incorporated (the Association), which comprises the statement of financial position as at 31 December 2023, the statement of comprehensive income, statement of changes in equity and statement of cash flows for the year then ended, and notes to the financial statements, including a summary of significant accounting policies, and a report by the Board of Management.

In our opinion the financial report of Patch Theatre Company Incorporated has been prepared in accordance with Division 60 of the *Australian Charities and Not-for-profits Commission Act 2012*, including:

- a) giving a true and fair view of the Association's financial position as at 31 December 2023 and of its financial performance for the year then ended; and
- b) complying with Australian Accounting Standards to the extent described in Note 1, and Division 60 of the *Australian Charities and Not-for-profits Commission Regulation 2022*.

Basis for Opinion

We conducted our audit in accordance with Australian Auditing Standards. Our responsibilities under those standards are further described in the Auditor's Responsibilities for the Audit of the Financial Report section of our report. We are independent of the Association in accordance with the auditor independence requirements of the *Australian Charities and Not-for-profits Commission Act 2012* (ACNC Act) and the ethical requirements of the Accounting Professional and Ethical Standards Board's *APES 110 Code of Ethics for Professional Accountants* (the Code) that are relevant to our audit of the financial report in Australia. We have also fulfilled our other ethical responsibilities in accordance with the Code.

We believe that the audit evidence we have obtained is sufficient and appropriate to provide a basis for our opinion.

Emphasis of Matter – Basis of Accounting

We draw attention to Note 1 to the financial report, which describes the basis of accounting. The financial report has been prepared for the purpose of fulfilling the Association's financial reporting responsibilities under the ACNC Act. As a result, the financial report may not be suitable for another purpose. Our opinion is not modified in respect of this matter.

Responsibilities of Management and Those Charged with Governance for the Financial Report

The management of the Association are responsible for the preparation of the financial report that gives a true and fair view and have determined that the basis of preparation described in Note 1 to the financial report is appropriate to meet the requirements of the ACNC Act and the needs of the members. Management's responsibility also includes such internal control as management determine is necessary to enable the preparation of the financial report that gives a true and fair view and is free from material misstatement, whether due to fraud or error.

In preparing the financial report, management are responsible for assessing the Association's ability to continue as a going concern, disclosing, as applicable, matters related to going concern and using the going concern basis of accounting unless management either intend to liquidate the Association or to cease operations, or has no realistic alternative but to do so.

Management are responsible for overseeing the Association's financial reporting process.

Auditor's Responsibilities for the Audit of the Financial Statements

Our objectives are to obtain reasonable assurance about whether the financial report as a whole is free from material misstatement, whether due to fraud or error, and to issue an auditor's report that includes our opinion. Reasonable assurance is a high level of assurance, but is not a guarantee that an audit conducted in accordance with the Australian Auditing Standards will always detect a material misstatement when it exists. Misstatements can arise from fraud or error and are considered material if, individually or in the aggregate, they could reasonably be expected to influence the economic decisions of users taken on the basis of this financial report.

A further description of our responsibilities for the audit of these financial statements is located at the Auditing and Assurance Standards Board website at:

https://www.auasb.gov.au/auditors_responsibilities/ar4.pdf

This description forms part of our independent auditor's report.



William Buck (SA)
ABN 38 280 203 274



Grant Martinella
Partner

Adelaide, 23 April 2024.



FINANCIAL REPORT

**PATCH THEATRE COMPANY INC.
31 DECEMBER 2023
REPORT BY THE BOARD OF MANAGEMENT**

During the financial year, no officer of the Association, or any firm of which an officer is a member, or any corporate in which an officer has a substantial interest, has received or become entitled to receive a benefit as a result of a contract between an officer, firm or corporate and the Association.

During the financial year, no officer of the Association has received directly or indirectly from the Association any payment or other benefit of a pecuniary value, other than:

- In the case of officers employed by the Association, approved remuneration which have been determined in accordance with general market conditions;
- In the case of directors, payments as disclosed separately in note 15 to the financial statements.

Dated at Adelaide this 16th day of April 2024

Signed in accordance with a resolution of the Board



.....
LIZ HAWKINS - CHAIRPERSON



.....
BEN OPIE - TREASURER

FINANCIAL REPORT

**PATCH THEATRE COMPANY INC.
31 DECEMBER 2023
STATEMENT BY THE BOARD OF MANAGEMENT**

The Board has determined that the Association is not a reporting entity and that this special purpose financial report has been prepared in accordance with the accounting policies outlined in Note 1 to the financial statements.
In the opinion of the Board, the financial report as set out on pages 44 to 46:

- a) presents fairly the results and cash flows of the Association for the 12 month period ending 31 December 2023 and the state of the affairs of the Association as at that date; and
- b) as at the date of this statement, there are reasonable grounds to believe that the Association will be able to pay its debts as and when they fall due.

Signed in accordance with a resolution of the Board



.....
LIZ HAWKINS - CHAIRPERSON



.....
BEN OPIE - TREASURER

Dated at Adelaide this 16th day of April 2024

FINANCIAL REPORT

PATCH THEATRE COMPANY INC STATEMENT OF PROFIT OR LOSS AND OTHER COMPREHENSIVE INCOME FOR THE YEAR ENDED 31 DECEMBER 2023

	Note	2023 (\$)	2022 (\$)
Performance Fees		625,546	562,092
Grant Revenue	2(a)	927,658	1,061,161
Donations Received		6,424	40,285
Interest		31,656	5,996
Membership Subscriptions		240	180
Sundry Income		11,926	146
Trusts & Foundations		120,000	84,500
Royalties Received		4,813	29,629
Equipment Hire		13,660	13,870
Sponsorship		-	5,000
Insurance Recoveries		12,612	-
Workshop Fees		2,500	14,800
Other Production Income		18,000	2,250
Total revenue		1,775,035	1,819,909

	Note	2023 (\$)	2022 (\$)
Administration	2(b)	793,868	756,599
Depreciation		8,866	11,194
Amortisation		3,171	7,090
Depreciation - Right of Use Asset		87,801	35,301
Home - PreProd		145	159,751
Home - Adelaide		-	69,257
Home - Outer Metro		-	16,467
Home - Regional		-	52,716
I Wish... - Australian Tour		72,343	-
Adelaide University project- Wonderverse (Creative Development)		26,390	-
Lighthouse - Perth		-	71,634
New Work Development		4,663	-
Office Move		47,369	16,295
Superluminal SA Museum (Creative Development)		57,123	-
Sea of Light		161,645	32,767
Sea of Light - Riyadh		-	118,753
Spark		92,289	26,598
Mirror Mirror		-	14,682
ZOOM - Australian Tour		169,653	347,074
ZOOM - US Tour		283,822	17,526
50th Birthday Project		-	41,602
Total expenditure		1,809,148	1,795,306
Net surplus for the year		(34,113)	24,603
Other comprehensive income		-	-
Total comprehensive income for the year		(34,113)	24,603

The statement of profit or loss and other comprehensive income is to be read in conjunction with the notes to the financial statements set out on pages 47 to 53.

FINANCIAL REPORT

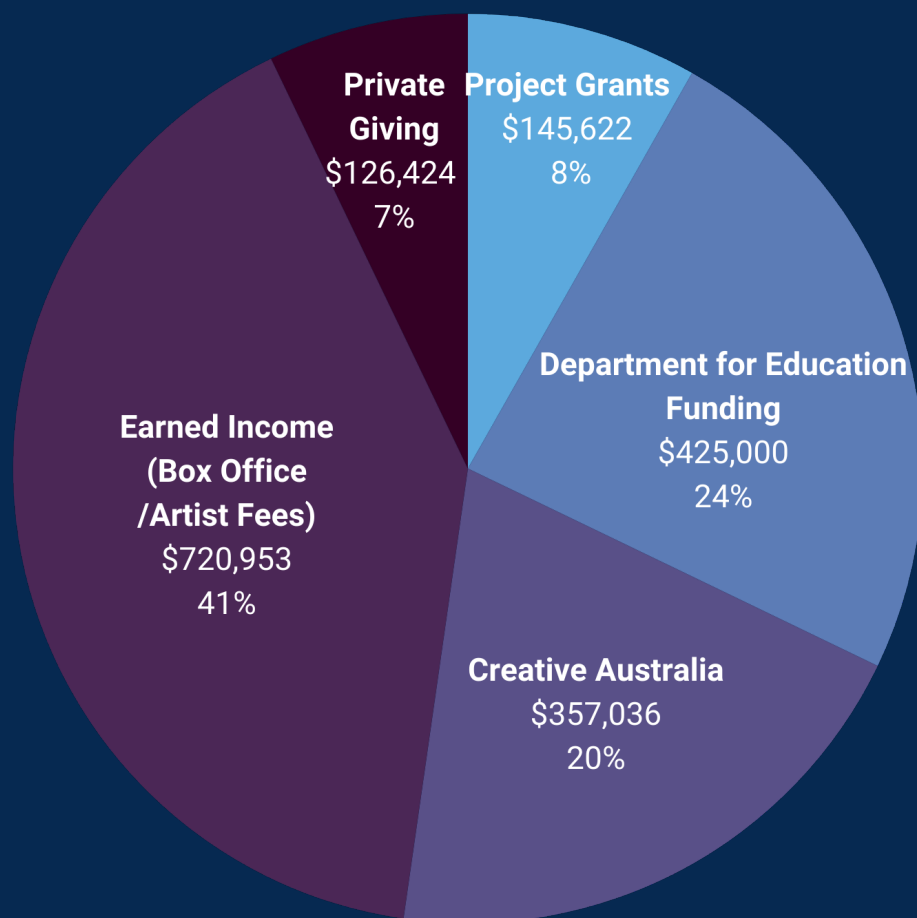
PATCH THEATRE COMPANY INC STATEMENT OF FINANCIAL POSITION AS AT 31 DECEMBER 2023

	Note	2023 (\$)	2022 (\$)
Current Assets			
Cash and cash equivalents	13	1,159,741	753,600
Trade and other receivables	4	91,607	106,394
Other financial assets	5	550,000	550,000
Total Current Assets		1,801,348	1,409,994
Non-Current Assets			
Property and equipment	6	417,362	409,949
Intangible Assets	7	13,995	15,000
Total Non-Current Assets		431,357	424,949
Total Assets		2,232,705	1,834,943
Current Liabilities			
Trade and other payables	8	90,691	93,254
Grant income deferred	9	1,262,638	749,099
Provisions	10	33,379	43,928
Lease Liabilities	11	75,056	68,552
Total Current Liabilities		1,461,764	954,833
Non-Current Liabilities			
Lease Liabilities	11	263,775	338,831
Total Non-Current Liabilities		263,775	338,831
Total Liabilities		1,725,539	1,293,664
Net Assets		507,166	541,279
Members' Funds			
Opening Balance	12	541,279	516,676
Surplus for the year	12	(34,113)	24,603
Total Members' Funds		507,166	541,279

The statement of profit or loss and other comprehensive income is to be read in conjunction with the notes to the financial statements set out on pages 47 to 53.

FINANCIAL REPORT

PATCH THEATRE COMPANY INC STATEMENT OF CASH FLOWS FOR THE YEAR ENDED 31 DECEMBER 2023



The statement of profit or loss and other comprehensive income is to be read in conjunction with the notes to the financial statements set out on pages 47 to 53.

	Note	2023 (\$)	2022 (\$)
Cash flows from operating activities			
Receipts from Grants & Sponsorships		1,604,748	982,228
Receipts from Activities & Other Income		897,293	822,527
Receipts from Government funding		-	-
Interest Received		31,656	5,996
Payments for Administration		(703,001)	(703,014)
Payments for Projects & Activities		(1,258,728)	(1,203,371)
Net cash provided by operating activities	13(b)	571,968	(95,634)
Cash flows from investing activities			
Acquisition of plant & equipment		(95,110)	(1,538)
Payments for investments		0	(550,000)
Payments for intangible assets		(2,165)	(15,000)
Net cash used in investing activities		(97,275)	(566,538)
Cash flows from financing activities			
Payments for lease liabilities		(68,552)	(33,691)
Net cash used in investing activities		(68,552)	(33,691)
Net increase/(decrease) in cash		406,141	(695,863)
Cash and cash equivalents opening		753,600	1,449,463
Cash and cash equivalents closing	13(a)	1,159,741	753,600
Representing :-			
Grant income deferred	9	1,262,638	749,099
Unrestricted purposes		(102,897)	4,501
		1,159,741	753,600

FINANCIAL REPORT

PATCH THEATRE COMPANY INC. NOTES TO THE FINANCIAL STATEMENTS FOR THE YEAR ENDED 31 DECEMBER 2023

1. Statement of Significant Accounting Policies

Patch Theatre Company Inc. (the "Association") is an Association domiciled in Australia.

a) Statement of Compliance

The financial report is a special purpose financial report prepared in order to satisfy the financial reporting requirements of the Australian Charities and Not-for-profits Commission Act 2012.

b) Basis of Preparation

In the opinion of the Officers, the Association is a non-reporting entity, because there are unlikely to exist users who are unable to command the preparation of reports tailored so as to satisfy specifically all of their information needs. Accordingly, the financial report is a "Special Purpose Financial Report" that has been prepared solely to meet the requirements of the Board of Management, the Members of the Association, and the Associations Incorporations Act.

The financial report has been prepared under the historical cost convention whereby all assets have been recorded at the lower of their cost or estimated net realisable value.

The financial report is presented in Australian dollars.

Other non-current assets are stated at the lower of carrying value and fair value less estimated costs of disposal.

The preparation of financial statements requires management to make judgements, estimates and assumptions that affect the application of accounting policies and the reported amounts of assets, liabilities, income and expenses. Actual results may differ from these estimates. Estimates and underlying assumptions are reviewed on an ongoing basis. Revisions to accounting estimates are recognised in the period in which the estimate is revised and in any future periods affected.

c) Income Tax

The Association is exempt from income tax, pursuant to the Income Tax Assessment Act. Accordingly, Australian Accounting Standard AASB 112 "Income Tax" has not been applied and no provision for income tax has been included in the accounts.

d) Revenue recognition

(i) Grants

The core principle of AASB 15 is that revenue is recognised on a basis that reflects the transfer of promised goods or services to customers at an amount that reflects the consideration the Association expects to receive in exchange for those goods or services. Government Grants are recognised as revenue in the year to which the grants relate and are applied fully to recurrent expenditure. Where there are conditions attached to grant revenue relating to the use of those grants for specific purposes, it is recognised in the statement of financial position as a liability until such conditions are met or services provided.

(ii) Interest revenue

Interest revenue is recognised as it accrues on a daily basis.

e) Depreciation and amortisation

Depreciation, using the diminishing value method, has been provided for in the accounts on all non-current assets, so as to allocate their cost over their estimated remaining useful life.

In assessing recoverable amounts of non-current assets the relevant cash flows have been discounted to their present value.

Amortisation, using the straight line method, has been provided for all intangible assets, so as to allocate their cost over their remaining useful life.

FINANCIAL REPORT

PATCH THEATRE COMPANY INC. NOTES TO THE FINANCIAL STATEMENTS FOR THE YEAR ENDED 31 DECEMBER 2023

1. Statement of Significant Accounting Policies (Continued)

f) Employee Benefits

Provision is made for the Association's liability for employee benefits arising from services rendered by employees to balance date. Employee entitlements expected to be settled within one year together with entitlements arising from wages, salaries and annual leave which will be settled after one year, have been measured at their nominal amount. Contributions made by the Association to employee superannuation funds are charged as expenses when incurred.

g) Impairment

The carrying amounts of the Association's assets are reviewed at each balance date to determine whether there is any indication of impairment. If any such indication exists, the asset's recoverable amount is estimated (see below). An impairment loss is recognised whenever the carrying amount of an asset exceeds its recoverable amount. Impairment losses are recognised in the income statement, unless an asset has previously been revalued in which case the impairment loss is recognised as a reversal to the extent of that previous revaluation with any excess recognised through the statement of profit or loss and other comprehensive income.

(i) Calculation of recoverable amount

The recoverable amount of assets is the greater of their net selling price and value in use. Value in use is taken to be the depreciated replacement cost of the asset concerned.

(ii) Reversals of impairment

An impairment loss is reversed if there has been a change in the estimates used to determine the recoverable amount.

(h) Cash and cash equivalents

Cash and cash equivalents comprise cash, bank accounts and short term deposits maturing within 90 days.

(i) Goods and services tax

Revenues, expenses and assets are recognised net of the amount of goods and services tax ("GST"). Receivables and payables are stated with the amount of GST included. The net amount of GST recoverable from, or payable to, the Australian Taxation Office ("ATO") is included as a current asset of current liability in the statement of financial position.

(j) Trade and other payables

Trade and other payables are stated at cost.

(k) Receivables

Trade and other receivables are stated at cost less impairment losses.

(l) Plant & Equipment

Items of plant and equipment are stated at cost less accumulated depreciation and impairment losses (see accounting policy (g)).

(m) Intangible assets

Intangible assets include website development costs which are carried at cost less any accumulated amortisation and impairment losses (see accounting policy (g)).

(n) Leases

Leases of fixed assets, where substantially all the risks and benefits incidental to the ownership of the asset, but not the legal ownership that are transferred to the Association are classified as finance leases.

AASB 16: Leases

At inception of a contract, the Association assesses if the contract contains or is a lease. If there is a lease present, a right-of-use asset and a corresponding lease liability is recognised by the Association where the Association is a lessee. However all contracts that are classified as shortterm leases (ie. a lease with a remaining term of 12 months or less) and leases of low-value assets are recognised as an operating expense on a straight-line basis over the term of the lease.

FINANCIAL REPORT

PATCH THEATRE COMPANY INC. NOTES TO THE FINANCIAL STATEMENTS FOR THE YEAR ENDED 31 DECEMBER 2023

2. Surplus from Ordinary Activities

(a) Revenues from Operating Activities

Grant Revenues:

	2023 (\$)	2022 (\$)
Arts SA Special Project Grant	142,499	59,000
Australia Council General Grant	357,036	353,500
Australia Council MFI Grant	-	34,587
Education Department Grant	425,000	300,000
Playing Australia Grant	-	238,088
RISE Grant	3,123	75,986
Total grant revenue	927,658	1,061,161

(b) Personnel Expenses included in Expenses

Administration wages & salaries	494,025	496,367
Superannuation contributions	45,648	46,368
Increase in liability for annual leave	10,549	5,263
	550,222	547,998

3. Auditor's Remuneration

Audit Services

Auditors of the Association:

Audit and review of financial reports	2,800	2,550
---------------------------------------	-------	-------

4. Trade and other receivables

Trade Receivables	21,627	11,401
Bank Guarantee	27,595	26,542
Deposits & Bonds	28,900	36,220
Other trade receivables and prepayments	13,485	32,231
	91,607	106,394

Trade receivables are shown net of impairment losses of \$nil (2022: \$nil)

5. Other financial assets

Term deposits	550,000	550,000
	550,000	550,000

FINANCIAL REPORT

PATCH THEATRE COMPANY INC. NOTES TO THE FINANCIAL STATEMENTS FOR THE YEAR ENDED 31 DECEMBER 2023

6. Property and equipment

Cost	Office & Stage Equipment	Leased Assets	Total
Balance at 1 January 2022	276,512	154,960	431,472
Acquisitions	1,538	405,983	407,521
Disposals	(243,002)	(121,125)	(364,127)
Balance at 31 December 2022	35,048	439,818	474,866
Balance at 1 January 2023	35,048	439,818	474,866
Acquisitions	95,110		95,110
Disposals	-	(16,062)	(16,062)
Balance at 31 December 2023	130,158	423,756	553,914
Depreciation & impairment losses			
Balance at 1 January 2022	262,733	119,816	382,549
Depreciation charge for the year	11,194	35,301	46,495
Written-back depreciation	(243,002)	(121,125)	(364,127)
Balance at 31 December 2023	30,925	33,992	64,917
Balance at 1 January 2023	30,925	33,992	64,917
Depreciation charge for the year	8,866	87,801	96,667
Written-back depreciation		(25,172)	(25,172)
Balance at 31 December 2023	39,791	96,621	136,412
Carrying Amounts			
At 1 January 2022	13,779	35,144	48,923
At 31 December 2022	4,123	405,826	409,949
At 1 January 2023	4,123	405,826	409,949
At 31 December 2023	90,367	327,135	417,502

FINANCIAL REPORT

PATCH THEATRE COMPANY INC. NOTES TO THE FINANCIAL STATEMENTS FOR THE YEAR ENDED 31 DECEMBER 2023

7. Intangible Assets

	2023 (\$)	2022 (\$)
Website Development Costs as at 1 January	15,000	7,090
Additions	2,165	15,000
Amortisation	(3,171)	(7,090)
Website Development Costs at 31 December	13,995	15,000

8. Trade and other payables

Creditors and Accruals	73,346	93,254
Visa Company Manager	17,345	-
	90,691	93,254

9. Grants in Advance

<i>Funding Description</i>		
Australia Council and others	1,262,638	749,099
	1,262,638	749,099

10. Provisions

<i>Current</i>		
Liability for Annual Leave	18,379	28,928
Other Provisions	15,000	15,000
	33,379	43,928

11. Lease Liabilities

<i>Current</i>		
Lease Liabilities	75,056	68,552
	75,056	68,552
<i>Non-Current</i>		
Lease Liabilities	263,775	338,831
	263,775	338,831

FINANCIAL REPORT

PATCH THEATRE COMPANY INC. NOTES TO THE FINANCIAL STATEMENTS FOR THE YEAR ENDED 31 DECEMBER 2023

12. Members Funds

	2023 (\$)	2022 (\$)
Member's Funds at beginning of year	541,279	516,676
Net surplus attributable to members	(34,113)	24,603
Member's Funds at end of year	507,166	541,279

13. Notes to the Statement of Cash Flows

(a) Cash and cash equivalents

Cash on Hand	1,324	1,324
Cash at Bank	1,158,417	752,276
Cash and cash equivalents in the statement of cash flows	1,159,741	753,600

(b) Reconciliation of cash flows from operating activities

Cash flows from operating activities

Surplus for the period	(34,113)	24,603
Adjustments for:		
Depreciation	5 87,697	46,495
Amortisation	6 3,170	7,090
Operating profit before changes in working capital and provisions	56,754	78,188
(Increase) in receivables & other assets	14,787	(95,224)
Increase/(decrease) in creditors & accruals	(2,563)	(20,313)
Increase/(decrease) in grants in advance	513,539	(78,548)
Increase in provisions	(10,549)	20,263
Net Cash provided by Operating Activities	571,968	(95,634)

FINANCIAL REPORT

PATCH THEATRE COMPANY INC. NOTES TO THE FINANCIAL STATEMENTS FOR THE YEAR ENDED 31 DECEMBER 2023

14. Commitments and Contingent Liabilities

The Association as at 31 December 2022 had no commitments and contingent liabilities (2021: Nil).

15. Related Party Disclosures

The names of each person holding the position of Board member during the financial year are:

Janet Worth (Chairperson) - resigned 1 February 2023
Liz Hawkins (Chairperson) - appointed 1 February 2023
Ben Opie (Treasurer)
Amanda Wheeler
Peter Campbell - resigned 18 April 2023
Jason Dunstone - resigned 18 April 2023
Anne- Marie Shin - resigned 18 April 2023
Chris Drummond
Boram Lee
Dearna Newchurch - appointed 18 April 2023
Reena Costello - appointed 18 April 2023
Deborah Hughes - appointed 18 April 2023

The persons listed above held the position of Board member for the whole of the financial year unless otherwise stated.

Remuneration

Nil amounts (2021: nil) were paid to Board members during the year.

Other transactions with the Association

There were no other payments made to specified members, or to entities where a specified member holds a position that results in them having control or significant influence over the financial or operating policies of those entities.

16. Events After the Reporting Period

The Board is not aware of any other significant events since the end of the reporting period.

17. Association Details

The registered office and principal place of business of the association is:

Patch Theatre Company Inc.
63 King William Street
Kent Town SA 5067

ACKNOWLEDGEMENTS

GOVERNMENT SUPPORT



FOUNDATION SUPPORT



Delivering *Spark* in schools across regional South Australia is made possible thanks to funding from the Department for Education and the generous support of James & Diana Ramsay Foundation, FWH Foundation, John T Reid Charitable Trust, Lang Family Foundation, and Thyne Reid foundation.

PARTNERSHIP SUPPORT



CREATIVE PARTNER



DONORS

Johannah Somfleth, Janet Worth, P&S Smith, Elspeth Harley, Liz Hawkins, Christina Jang, Patrick Morgan, Lynette Head, Julie Almond, Jane Thompson, Chris Drummond & Susannah Sweeney, Jenny & Russell Duncan, Catherine Fitz-Gerald, Ann Gorey, and many other valued donors

PRESENTATION PARTNERS

SOUTH AUSTRALIA

Adelaide Festival Centre

DreamBIG Children's Festival, Adelaide
Space Theatre, Adelaide
Douglas Gautier
Susannah Sweeney
Georgi Paech

Country Arts SA

Chaffey Theatre, Renmark
Hopgood Theatre, Noarlunga
Middleback Theatre, Whyalla
Northern Festival Centre, Pt Pirie
Sir Robert Helpmann Theatre, Mt Gambier
Anthony Peluso
Sussan Baldwin

Lit for Life Partners:

City of Charles Sturt Council

Ngutungka West Lakes Library, West Lakes
Sascha Hutchinson

City of Holdfast Bay

Brighton Library, Brighton

City of Marion

Cove Civic Centre, Hallett Cove
Marion Cultural Centre, Marion

City of Port Adelaide Enfield

Port Adelaide Library, Port Adelaide
The Parks Theatre, Angle Park

City of Prospect

Payinthe, Prospect Library & Town Hall, Prospect

City of Salisbury

Salisbury Community Hub, Salisbury

Other SA Presentation Partners

Illuminate Adelaide, Adelaide University
pop-up venue, Adelaide
Mitcham Library, Mitcham
Naracoorte Library, Naracoorte
Port Augusta Public Library, Port Augusta
SALT Festival, Cummins Hall, Cummins
Women's and Children's Hospital, Adelaide

NATIONAL

Arts Centre Melbourne, Melbourne VIC
AWESOME Festival, Perth Institute of
Contemporary Arts, Perth WA
Cairns Children's Festival, Tanks Arts Centre,
Cairns QLD
Cardinia Cultural Centre, Pakenham VIC
Darwin Festival, Museum and Art Gallery
of the Northern Territory, Darwin NT
Horsham Town Hall, Horsham VIC
HOTA, Gold Coast QLD
South Side Festival, Frankston Arts Centre,
Frankston VIC
Ten Days on the Island, Hive Tasmania, Ulverston TAS
The Round, Nunawading VIC

INTERNATIONAL

Comstock Community Auditorium, Kalamazoo USA
Junior Festival, Fleck Dance Theatre,
Harbourfront Centre, Toronto Canada
Ottawa Children's Festival, Ottawa Canada
Manitoba Theatre for Young People,
Winnipeg Canada
Waterfront Theatre, Vancouver Canada
Winter Centre, Millersville University, Millersville USA



patchtheatre.org.au